

Welcome to Our Centers

City, State Host Institution (if applicable) Page

USA

Atlanta, Georgia	Southern Polytechnic State University	34
Berkeley, California	City Center	34
Boston - Downtown, Massachusetts	City Center	35
Boston - Newton, Massachusetts	Mount Ida College	35
Bristol, Rhode Island	Roger Williams University	36
Charlotte, North Carolina	Queens University of Charlotte	36
Chicago, Illinois	Dominican University	37
Cincinnati, Ohio	University of Cincinnati	37
Clemson, South Carolina	Clemson University at UCG	38
Cleveland, Ohio	Case Western Reserve University	38
Columbus, Ohio	Ohio Dominican University	39
Dallas, Texas	University of Texas at Dallas	39
DeKalb, Illinois	Northern Illinois University	40
Denver, Colorado	Front Range Community College	40
Fort Smith, Arkansas	University of Arkansas - Fort Smith	41
Fort Wayne, Indiana	Indiana University - Purdue University Fort Wayne (IPFW)	41
Fredericksburg, Virginia	University of Mary Washington	42
Garden City, New York	Adelphi University	42
Grand Forks, North Dakota	University of North Dakota	43
Grand Rapids, Michigan	Grand Valley State University	43
Honolulu, Hawaii	Hawaii Pacific University	44
Houston, Texas	University of St. Thomas - Houston	44
Houston - Clear Lake, Texas	University of Houston - Clear Lake	45
Indianapolis, Indiana	Indiana University - Purdue University Indianapolis (IUPUI)	45
Johnson City, Tennessee	East Tennessee State University	46
La Verne, California	University of La Verne	46
Laramie, Wyoming	University of Wyoming	47
Las Vegas, Nevada	College of Southern Nevada	47
Lubbock, Texas	Texas Tech University	48
Melbourne, Florida	Florida Institute of Technology	48
Miami, Florida	Barry University	49
Milwaukee, Wisconsin	Marquette University	49
Nashville, Tennessee	Middle Tennessee State University	50
New Haven, Connecticut	University of New Haven	50
New York (Manhattan), New York	The Juilliard School	51
New York (Manhattan), New York	Adelphi University - Manhattan Center	51
New York (Riverdale), New York	College of Mount Saint Vincent	52
Oklahoma City, Oklahoma	Oklahoma City University	52
Orlando, Florida	Stetson University Extension	53
Philadelphia, Pennsylvania	Saint Joseph's University	53
Pittsburgh, Pennsylvania	Point Park University	54
Plymouth, New Hampshire	Plymouth State University	54
Pocatello, Idaho	Idaho State University	55
Portland, Oregon	Concordia University	55
Rochester, New York	The State University of New York The College at Brockport	56
Ruston, Louisiana	Louisiana Tech University	56
San Antonio, Texas	University of the Incarnate Word	57
San Diego, California	City Center	57
San Francisco - Downtown, California	Golden Gate University	58
San Francisco - North Bay, California	Dominican University of California	58
Santa Barbara, California	City Center	59
Santa Cruz, California	City Center	59
Santa Monica, California	City Center	60

City, State Host Institution (if applicable) Page

Seattle, Washington	City Center	60
Silicon Valley, California	City Center	61
St. Louis, Missouri	University of Missouri - St. Louis	61
St. Paul, Minnesota	University of St. Thomas - Minnesota	62
St. Petersburg, Florida	Eckerd College	62
Tacoma, Washington	Bates Technical College	63
Tampa, Florida	The University of Tampa	63
Teaneck, New Jersey	Fairleigh Dickinson University	64
Thousand Oaks, California	California Lutheran University	64
Washington, DC	City Center	65

City, State Host Institution (if applicable) Page

Australia

Sydney, New South Wales	City Center	66
-------------------------	-------------	----

Canada

Toronto, Ontario	City Center	67
Vancouver, British Columbia	City Center	67

Europe

Sophia Antipolis (near Nice), France	SKEMA Business School	68
--------------------------------------	-----------------------	----

China

Shanghai	ELS Language Center	69
----------	---------------------	----

Malaysia

Kuala Lumpur	Universiti Putra Malaysia	69
--------------	---------------------------	----

Other International Study Options

Indonesia
Jakarta (2)

Malaysia
Johor Bahru
Kuala Lumpur
(2, including Universiti
Putra Malaysia)
Penang
Subang Jaya

Panamá
Panamá City

Saudi Arabia
Dammam
Riyadh (3)

South Korea
Seoul (3)

Atlanta, Georgia

Southern Polytechnic State University

ELS/Atlanta is located on the campus of Southern Polytechnic State University (SPSU). Atlanta is a diverse, progressive Southern city where you can enjoy activities including CNN studios tours, the World of Coca-Cola, Six Flags Amusement Park® and various sporting events. SPSU currently enrolls students from 82 countries.

RANKING: #85 – “Best Regional Universities - South” – U.S. News & World Report, 2012

COURSES: Intensive-Academic (\$1,730/session), Intensive-General (\$1,680/session), Semi-Intensive (\$1,410/session), American Explorer (\$1,350/session), TOEFL® Prep (starting at \$2,040), Executive Programs

OFFICIAL TESTING: TOEFL® iBT, IELTS™

OPTIONS AVAILABLE: University class visits

HOUSING OPTIONS: Apartment-style student residence (on-campus) or homestay (ranges from \$860 - \$915/session)

HOST INSTITUTION: Waive TOEFL® for ELS 112 graduates

HOST INSTITUTION SAMPLE MAJORS INCLUDE: Mechatronics Engineering, Computer Game Design, Systems Engineering, Construction Engineering, Information Technology, Computer Science, Biology, Business

Marietta, Georgia 30060
 •Suburban •Public •Enrollment: 5,700



Begin Today!

For anyone interested in studying in the USA, try to interact as much as possible with people from other countries, not only to improve your English, but also to learn about other cultures
 – PABLO, VENEZUELA



Berkeley, California

Center with University Access

ELS/Berkeley is located in Hillside Hall, a residence and classroom facility, which houses both ELS students and students from the University of California, Berkeley. Many of the world's greatest scholars have studied in Berkeley, and you can take advantage of many libraries, cafés and bookstores. ELS is in an ideal location in the San Francisco Bay Area with a temperate climate, excellent public transportation and easy access to San Francisco, San Jose and Marin County. Berkeley is also located near Muir Woods and Napa Wine Country. The city of Berkeley has a small population but a big reputation and is host to many art and cultural activities including numerous festivals.

COURSES: Intensive-Academic (\$1,730/session), Intensive-General (\$1,680/session), Semi-Intensive (\$1,410/session), American Explorer (\$1,350/session), TOEFL® Prep (starting at \$2,040)

OPTIONS AVAILABLE: Conversation Partner, Volunteer Experience

OFFICIAL TESTING: TOEFL® iBT

HOUSING OPTIONS: Student residence (off-campus) or homestay (ranges from \$905-\$1,375/session)

Berkeley, California 94704
 •Urban



Boston – Downtown, Massachusetts

ELS/Boston - Downtown is located on Tremont Street, at the crossroads of Beacon Hill and Downtown Crossing. The Boston Commons, Government Center, Theater District and Chinatown are all within walking distance from the Center. The Center is also close to Boston's Back Bay area – rich with many major universities, restaurants, museums, shopping and other tourist attractions.

COURSES: Intensive-Academic (\$1,730/session), Intensive-General (\$1,680/session), Semi-Intensive (\$1,410/session), American Explorer (\$1,350/session), TOEFL® Prep (starting at \$2,040), Executive Programs

OFFICIAL TESTING: TOEFL® iBT, IELTS™

OPTIONS AVAILABLE: Class visits at Harvard University and other local universities can be arranged

HOUSING OPTIONS: Student residence (off-campus dormitory) or homestay (ranges from \$1,110-\$1,650/session)



Boston, Massachusetts 02108
•Urban



ELS not only is the place that improved my English but also helped me meet many friends from different countries. Now, I am going to Roger Williams University. Thanks ELS!
– LANCE, TAIWAN



Begin Today!

Boston - Newton, Massachusetts Mount Ida College

ELS/Boston - Newton is located on the safe and tranquil campus of Mount Ida College. You can enjoy studying on a traditional college campus just 13 kilometers from downtown Boston. Boston is home to many world-class museums, excellent theaters, trendy shopping spots and restaurants. Cape Cod, the White Mountains, New York City and Montreal are just a few hours away.

RANKING: #30 – “Best Regional Universities - North” – U.S. News & World Report, 2012

COURSES: Intensive-Academic (\$1,730/session), Intensive-General (\$1,680/session), Semi-Intensive (\$1,410/session), American Explorer (\$1,350/session), TOEFL® Prep (starting at \$2,040), Executive Programs

OFFICIAL TESTING: TOEFL® iBT, IELTS™

HOUSING OPTIONS: Student residence (on-campus) or homestay (ranges from \$1,110-\$1,650/session)

HOST INSTITUTION: Scholarships available; waive TOEFL® for ELS 112 graduates

HOST INSTITUTION SAMPLE MAJORS INCLUDE: Business, Child Care/Development, Fashion Design, Interior Design, Sports Administration, Veterinary Technology



Newton, Massachusetts 02459
•Suburban •Private •Enrollment: 1,500



Bristol, Rhode Island Roger Williams University

ELS/Bristol is located on the beautiful waterfront campus of Roger Williams University (RWU) in the historic seaport town of Bristol, Rhode Island. The campus is only 30 minutes from Providence and Newport and one hour from Boston – all accessible by public transportation for recreation, shopping, dining and more. Bristol is just 45 minutes from the Atlantic Ocean.

RANKING: Ranked #46 – “Best Regional Universities - North” – *U.S. News & World Report, 2012*

COURSES: Intensive-Academic (\$1,730/session), Semi-Intensive (\$1,410/session), American Explorer (\$1,350/session)

OFFICIAL TESTING: TOEFL® iBT

OPTIONS AVAILABLE: Conversation Partner, university class visits and auditing

HOUSING OPTIONS: Student residence (off-campus) or homestay (ranges from \$1,060-\$1,740/session)

HOST INSTITUTION: Concurrent enrollment available, scholarships available, waive TOEFL® for ELS 112 graduates

HOST INSTITUTION SAMPLE MAJORS INCLUDE: Architecture, Business Administration and Management, Construction Management, Environmental Engineering, International Business, Marine Biology, Marketing

Bristol, Rhode Island 02809
•Suburban •Private •Enrollment: 9,221



Begin Today!

The coolest thing for me in ELS was that I could study English from excellent teachers and meet new friends from all over the world at the same time.
— QIAN, CHINA



Charlotte, North Carolina Queens University of Charlotte

ELS/Charlotte is located close to the main campus of Queens University of Charlotte. The Center is minutes away from the clean and modern city center and major shopping areas. You can enjoy a wide range of sports and entertainment events in the city. The scenic Appalachian Mountains and sparkling Carolina beaches are just a few hours away.

RANKING: Ranked #21 – “Best Regional Universities - South” – *U.S. News & World Report, 2012*

COURSES: Intensive-Academic (\$1,730/session), Intensive-General (\$1,680/session), Semi-Intensive (\$1,410/session), American Explorer (\$1,350/session), TOEFL® Prep (starting at \$2,040)

OFFICIAL TESTING: TOEFL® iBT, IELTS™

OPTIONS AVAILABLE: University class visits

HOUSING OPTIONS: Student residence (off-campus) or homestay (ranges from \$750-\$980/session)

HOST INSTITUTION: Concurrent enrollment available, waive TOEFL® for ELS 112 graduates

HOST INSTITUTION SAMPLE MAJORS INCLUDE: Business Administration, Education, Information Systems, Biology (Pre-Medical), MBA, Organizational Communication MA

Charlotte, North Carolina 28209
•Suburban •Private •Enrollment: 2,600



Chicago, Illinois

Dominican University

ELS/Chicago is on the gorgeous campus of Dominican University, only 25 minutes from downtown Chicago. Cultural activities include the Lyric Opera, the Museum Campus (Aquarium, Planetarium, Natural History Museum), the Art Institute of Chicago, an exciting nightlife scene and world-class sporting events. The "Magnificent Mile" and Navy Pier offer stores and restaurants within walking distance of beautiful Lake Michigan.

RANKING: Ranked #19 – "Best Regional Universities - Midwest" – U.S. News & World Report, 2012

COURSES: Intensive-Academic (\$1,730/session), Intensive-General (\$1,680/session), Semi-Intensive (\$1,410/session), American Explorer (\$1,350/session), TOEFL® Prep (starting at \$2,040), Executive Programs

OFFICIAL TESTING: TOEFL® iBT, IELTS™, TOEIC®

OPTIONS AVAILABLE: Conversation Partner, university class visits and auditing

HOUSING OPTIONS: Student residence (both on- and off-campus), ELS apartments, or homestay (ranges from \$980-\$1,800/session)

HOST INSTITUTION: Waive TOEFL® for ELS 112 graduates

HOST INSTITUTION SAMPLE MAJORS INCLUDE: Accounting, Biology, Criminology, Fashion Design/Illustration, Graphic Design, International Business, International Relations, Social Work, Library and Information Sciences

River Forest, Illinois 60305
•Suburban •Private •Enrollment: 2,200



ELS was an unforgettable experience. In these 4 months I have learned to live alone, rely on myself, and grow as a person. I built friendships with very special people. I will never forget all the good times!
– CAMILA, VENEZUELA



Begin Today!

Cincinnati, Ohio

University of Cincinnati

ELS/Cincinnati is located on the modern campus of the University of Cincinnati (UC). The Center is close to shops, restaurants, sporting events and many attractions. UC offers more than 300 degree programs. In addition, many university programs offer the opportunity to intern with numerous Global 500 companies that are based in the Cincinnati area.

RANKING: Ranked one of the "Top 400 World Universities" – Times Higher Education, 2012

COURSES: Intensive-Academic (\$1,730/session), Intensive-General (\$1,680/session), Semi-Intensive (\$1,410/session), American Explorer (\$1,350/session), TOEFL® Prep (starting at \$2,040)

OFFICIAL TESTING: TOEFL® iBT, IELTS™

HOUSING OPTIONS: Student residence (on-campus) or homestay (ranges from \$895-\$915/session)

HOST INSTITUTION: Concurrent enrollment available, scholarships available, waive TOEFL® for ELS 112 graduates

HOST INSTITUTION SAMPLE MAJORS INCLUDE: Architecture and Design, Behavioral and Social Sciences, Engineering, Business, Computer Sciences, Criminal Justice

Cincinnati, Ohio 45221
•Urban •Public •Enrollment: 42,421



Clemson, South Carolina

Clemson University at University Center of Greenville

ELS/Clemson UCG is located at the University Center of Greenville (UCG). You will have access to smart-technology classrooms, the virtual library, free Wi-Fi and a computer technology center. Clemson's International Center for Automotive Research offers an advanced-technology research campus where academia, industry and government organizations collaborate.

RANKING: Ranked one of the "Top 400 World Universities" – *Times Higher Education*, 2012

COURSES: Intensive-Academic (\$1,730/session), Intensive-General (\$1,680/session), Semi-Intensive (\$1,410/session), American Explorer (\$1,350/session)

OFFICIAL TESTING: TOEFL® iBT

OPTIONS AVAILABLE: University class visits

HOUSING OPTIONS: Student residence (off-campus) or homestay (ranges from \$890-\$895/session)

HOST INSTITUTION: Concurrent enrollment available, waive TOEFL® for ELS 112 graduates pursuing select graduate programs

HOST INSTITUTION GRADUATE MAJORS INCLUDE*: Accounting, Engineering, Computer Science, Food Technology, Mathematical Science, MBA, Plant and Environmental Science

(*Note that International students can apply for Conditional Admission only through select programs in Clemson University's Graduate School)

Greenville, South Carolina 29607
•Urban •Public •Enrollment: 19,454



Begin Today!

ELS was the place when I truly built ties of friendship that I am sure will last forever. I can feel the progress in my English now.
— ALEIANDRA, COLOMBIA



Cleveland, Ohio

Case Western Reserve University

ELS/Cleveland is situated on the campus of prestigious Case Western Reserve University. We are located in the University Circle district of Cleveland. Many education, health care, arts and cultural institutions can be found here. The combination of ultra-modern architecture alongside 19th-century mansions, all located in a green, park-like setting, gives this area a very distinctive atmosphere.

RANKING: Ranked #38 – "Best National Universities" – *U.S. News & World Report*, 2012

COURSES: Intensive-Academic (\$1,730/session), Intensive-General (\$1,680/session), Semi-Intensive (\$1,410/session), American Explorer (\$1,350/session)

OPTIONS AVAILABLE: Conversation Partner

OFFICIAL TESTING: TOEFL® iBT, IELTS™

HOUSING OPTIONS: Student residence (off-campus) or homestay (ranges from \$855-\$1,150/session)

HOST INSTITUTION: Waive TOEFL® for ELS 112 graduates (3.0 GPA at ELS required) for graduate studies and law school only

HOST INSTITUTION SAMPLE MAJORS INCLUDE: Accounting, Business/Management, Computer Science, Engineering, Finance, Mathematics, Physics

Cleveland, Ohio 44106
•Urban •Private •Enrollment: 9,837



Columbus, Ohio

Ohio Dominican University

ELS/Columbus is located at Ohio Dominican University, which is about 15 minutes northeast of downtown Columbus. The safe, residential and wooded campus features a bookstore, dining areas, recreation area, wellness center and a fitness area. Columbus is home to numerous museums and galleries, sports teams, the top-ranked zoo and the Columbus Symphony Orchestra. The city hosts an exciting nightlife.

RANKING: Ranked #98 – “Best Regional Universities - Midwest” – *U.S. News & World Report, 2012*

COURSES: Intensive-Academic (\$1,730/session), Intensive-General (\$1,680/session), Semi-Intensive (\$1,410/session), American Explorer (\$1,350/session)

OPTIONS AVAILABLE: University class visits and auditing

OFFICIAL TESTING: TOEFL® iBT

HOUSING OPTIONS: Student residence (on-campus) or homestay (ranges from \$865-\$1,050/session)

HOST INSTITUTION: Concurrent enrollment available, waive TOEFL® for ELS 112 graduates

HOST INSTITUTION SAMPLE MAJORS INCLUDE: Undergraduate: Accounting, Economics, International Business, Chemistry, Biology. Graduate: Business Administration, Education, TESOL

Columbus, Ohio 43219
•Suburban •Private •Enrollment: 3,000



I will never forget every minute I lived in the USA: every day I learned something more, thanks to my teachers who were always ready to help me and correct my mistakes! – COSTANZA, ITALY



Begin Today!

Dallas, Texas

University of Texas at Dallas

OPENING JANUARY 2013

ELS/Dallas will be located at the University of Texas at Dallas. The ninth largest city in the USA, Dallas is a modern city. This metropolitan area offers “southern hospitality” for all. With one of the largest arts districts in the nation, Dallas offers world-class shopping, outdoor activities, year-round professional sporting events and a great nightlife!

RANKING: Ranked #143 – Best National Universities – *U.S. News & World Report, 2012*

COURSES: Intensive-Academic (\$1,730/session), Intensive-General (\$1,680/session), Semi-Intensive (\$1,410/session), American Explorer (\$1,350/session)

OPTIONS AVAILABLE: Conversation Partners

OFFICIAL TESTING: TOEFL® iBT in 2013

HOUSING OPTIONS: Student residence (on-campus) or homestay (ranges from \$725-\$925/session)

HOST INSTITUTION: Waive TOEFL® for ELS 112 graduates

HOST INSTITUTION SAMPLE MAJORS INCLUDE: Accounting, Arts and Technology, Business Administration, Emerging Media and Communication, Geospatial Information Sciences, Molecular and Cell Biology, Public Affairs
UTDallas.edu/els

Dallas, Texas 75080
•Urban •Public •Enrollment: 18,864



DeKalb, Illinois Northern Illinois University

ELS/DeKalb is located in a small and friendly university community. Our Center is on the main campus of Northern Illinois University, with its 300 hectares of trees and grassy areas. An affordable cost of living and many outdoor activities make this the perfect location for students with families. Northern Illinois University offers 63 undergraduate majors, 79 graduate programs and 11 Ph.D. programs.

RANKING: Ranked #194 – “Best National Universities” – *U.S. News & World Report, 2012*

COURSES: Intensive-Academic (\$1,730/session), Intensive-General (\$1,680/session), Semi-Intensive (\$1,410/session), American Explorer (\$1,350/session)

OPTIONS AVAILABLE: Conversation Partners

OFFICIAL TESTING: TOEFL® iBT

HOUSING OPTIONS: Student residence (on-campus) or homestay (ranges from \$925-\$1,220/session)

HOST INSTITUTION: Concurrent enrollment available, waive TOEFL® for ELS 112 graduates

HOST INSTITUTION SAMPLE MAJORS INCLUDE:

Accountancy, Public Administration, Physics, Chemistry, Industrial/Systems Engineering, Computer Science, Engineering



DeKalb, Illinois 60115
•Rural •Public •Enrollment: 22,990

Begin Today!

I came to ELS unable to speak English, but during my two months here I learned, thanks to my teachers, their patience, and their kindness with me. I liked this experience. I will have this to remember forever. – ELIZABETH, CHILE



Denver, Colorado Front Range Community College

ELS/Denver is located on the campus of Front Range Community College (FRCC) in the metropolitan Denver suburb of Westminster. Denver is a vibrant city situated against the backdrop of the spectacular Rocky Mountains with ample restaurants, shopping and entertainment venues. World-class skiing and other seasonal outdoor activities are readily accessible.

RANKING: Front Range is the largest community college in Colorado – various Colorado media

COURSES: Intensive-Academic (\$1,730/session), Intensive-General (\$1,680/session), Semi-Intensive (\$1,410/session), American Explorer (\$1,350/session), Executive Programs

OPTIONS AVAILABLE: Conversation Partner, university class visits and auditing

OFFICIAL TESTING: TOEFL® iBT

HOUSING OPTIONS: Student residence (off-campus) or homestay (ranges from \$840-\$950/session)

HOST INSTITUTION: Concurrent enrollment available, waive TOEFL® for ELS 109 graduates

HOST INSTITUTION SAMPLE MAJORS INCLUDE: Business Management, Computer Technology, Health Care Professions, Architectural Engineering Technology, Multimedia Graphics Design. Guaranteed transfer credits to Colorado universities.



Westminster, Colorado 80031
•Suburban •Public •Enrollment: 25,000

Fort Smith, Arkansas

University of Arkansas - Fort Smith

ELS/Fort Smith is located on the safe, attractive campus of University of Arkansas - Fort Smith. UAFS is a public four-year university. Fort Smith is a city of 90,000 that offers a taste of the Old West. It also offers many opportunities for outdoor activities, such as like hiking, camping and swimming, and ample shopping and entertainment opportunities.

RANKING: Ranked #73 – “Best Regional Universities - South” – *U.S. News & World Report*

COURSES: Intensive-Academic (\$1,730/session), Intensive-General (\$1,680/session), Semi-Intensive (\$1,410/session), American Explorer (\$1,350/session)

OFFICIAL TESTING: TOEFL® iBT

OPTIONS AVAILABLE: Conversation Partners, university class visits

HOUSING OPTIONS: Student residence (on-campus) or homestay (ranges from \$750-\$885/session)

HOST INSTITUTION: Concurrent enrollment available, scholarships available, waive TOEFL® for ELS 112 graduates

HOST INSTITUTION SAMPLE MAJORS INCLUDE:

Business, Marketing, Accounting, Biology, Chemistry, English, Networking-IT, Programming, Media Communication

Fort Smith, Arkansas 72913
•Urban •Public •Enrollment: 7,716



ELS really understands students who learn English as a second language and helps students to get courage and confidence.
— JIM, SOUTH KOREA



Begin Today!

Fort Wayne, Indiana

Indiana University – Purdue University Fort Wayne

OPENING MAY 2013

ELS/Fort Wayne will be located on the campus of Indiana University – Purdue University Fort Wayne (IPFW). Known as the city of the three rivers, you can enjoy biking, hiking or walking along the beautiful Fort Wayne Rivergreenway. You can also take in festivals such as River Fest, Country Fest and the Muddy River Run. Fort Wayne is the second largest city in Indiana.

RANKING: Ranked among the top 25% nationally on National Board scores. Online undergraduate programs rank 10th nationally in faculty credentials and training; student housing ranked Top Ten in Customer Satisfaction for American Campus Communities.

COURSES: Intensive-Academic (\$1,730/session), Intensive-General (\$1,680/session), Semi-Intensive (\$1,410/session), American Explorer (\$1,350/session)

OFFICIAL TESTING: TOEFL® iBT in 2014

OPTIONS AVAILABLE: Conversation Partners

HOUSING OPTIONS: Apartment-style student residence or homestay – costs to be determined

HOST INSTITUTION: Concurrent enrollment available, class observations available, scholarships available, waive TOEFL® for ELS 112 graduates

HOST INSTITUTION SAMPLE MAJORS INCLUDE:

Accounting, Biochemistry, Business, Computer Engineering, Finance, Graphic Design, Mechanical Engineering Technology

Fort Wayne, Indiana 46805
•Urban •Public •Enrollment: 14,000



Fredericksburg, Virginia University of Mary Washington

ELS/Fredericksburg is located in the small, historic town of Fredericksburg, Virginia – an hour's drive from the nation's capital, Washington, DC. The University of Mary Washington is ranked by Forbes as one of the nation's top universities. Fiske Guide to Colleges 2012 designated UMW as a "Best Buy School."

RANKING: Ranked #15 – "Best Regional Colleges - South," U.S. News & World Report, 2012

COURSES: Intensive-Academic (\$1,730/session), Intensive-General (\$1,680/session), Semi-Intensive (\$1,410/session), American Explorer (\$1,350/session)

OPTIONS AVAILABLE: University class visits; concurrent enrollment for Levels 110 and above available

OFFICIAL TESTING: TOEFL® iBT

HOUSING OPTIONS: Student residence (on-campus) or homestay (ranges from \$800-\$1,200/session)

HOST INSTITUTION: Scholarships available, waive TOEFL® for ELS 112 graduates

HOST INSTITUTION SAMPLE MAJORS INCLUDE:

Undergraduate: Business Administration, Biology, English, Psychology, Political Science and International Affairs; Graduate: Business Administration, Management Information Systems

Fredericksburg, Virginia 22401
•Urban •Public •Enrollment: 5,000



Begin Today!

My plan after I finish is to go to University and study for my bachelor's degree in USA. I enjoyed the time here in ELS and I won't forget these amazing days all of my life. – DUA A. SAUDI ARABIA



Garden City, New York Adelphi University

ELS/Garden City is situated on the main campus of Adelphi University in Garden City, a safe and prosperous community on Long Island. The spacious suburban campus offers a peaceful setting for study and recreation. Garden City offers you easy access to the culture, entertainment and excitement of New York City.

RANKING: Ranked #152 – "Best National Universities" – U.S. News & World Report, 2012

COURSES: Intensive-Academic (\$1,730/session), Intensive-General (\$1,680/session), Semi-Intensive (\$1,410/session), American Explorer (\$1,350/session), TOEFL® Prep (starting at \$2,040)

OFFICIAL TESTING: TOEFL® iBT

OPTIONS AVAILABLE: University class visits

HOUSING OPTIONS: Student residence (on-campus) or homestay (ranges from \$1,030-\$1,400/session)

HOST INSTITUTION: Concurrent enrollment available, class observations available, scholarships available, waive TOEFL® for ELS 112 graduates

HOST INSTITUTION SAMPLE MAJORS INCLUDE: Business, Counseling Psychology, Health/Physical Education, School Psychology, Social Work, Special Education, TESOL, MBA

Garden City, New York 11530
•Suburban •Private •Enrollment: 7,922



Grand Forks, North Dakota

University of North Dakota

ELS/Grand Forks is located on the beautifully wooded campus of the University of North Dakota. The University's School of Aerospace Sciences is a world-renowned center for aerospace learning. It is nationally acclaimed for achievements in collegiate aviation education, atmospheric research, space studies and computer science applications, and well-recognized for leadership in energy engineering and entrepreneurship.

RANKING: Ranked #164 – "Best National Universities" – *U.S. News & World Report*, 2012

COURSES: Intensive-Academic (\$1,730/session), Semi-Intensive (\$1,410/session), American Explorer (\$1,350/session)

OPTIONS AVAILABLE: Conversation Partner, university class visits and auditing

OFFICIAL TESTING: TOEFL® iBT

HOUSING OPTIONS: Student residence (on-campus) or homestay (ranges from \$700-\$1,050/session)

HOST INSTITUTION: Concurrent enrollment available, scholarships available, waive TOEFL® for ELS 112 graduates

HOST INSTITUTION SAMPLE MAJORS INCLUDE: Atmospheric Sciences, Aviation Management, Chemical Engineering, Computer Science, Electrical/Electronics Engineering, Mechanical Engineering

Grand Forks, North Dakota 58202
 •Suburban •Public •Enrollment: 14,697



I strongly feel that after completing Level 112, I will be well prepared to attend college and to succeed in my career. I now understand the radio clearly, read books quickly and speak with foreign friends fluently. – XIAOTIAN, CHINA



Begin Today!

Grand Rapids, Michigan

Grand Valley State University

ELS/Grand Rapids is located next to the Allendale campus of Grand Valley State University. Nearby Grand Rapids is the second largest city in the state. Allendale is located within 30 minutes of the beautiful beaches of Lake Michigan and just two hours from Chicago. The Grand Rapids area is safe and welcoming and offers many cultural, entertainment and sports venues.

RANKING: Ranked #2 – "Up and Coming Universities - Midwest" – *U.S. News & World Report*, 2012

COURSES: Intensive-Academic (\$1,730/session), Semi-Intensive (\$1,410/session), American Explorer (\$1,350/session)

OPTIONS AVAILABLE: Conversation Partner, university class visits and auditing

OFFICIAL TESTING: TOEFL® iBT, IELTS™

HOUSING OPTIONS: Student residence (on-campus) or homestay (ranges from \$620-\$980/session)

HOST INSTITUTION: Concurrent enrollment available, waive TOEFL® for ELS 112 graduates, up to a \$5,000 Merit scholarship available to eligible students

HOST INSTITUTION SAMPLE MAJORS INCLUDE: Athletic Training/Sports Medicine, Business, Engineering, Computer Science, Film/Video Production, Medical Programs, MBA

Allendale, Michigan 49401
 •Suburban •Public •Enrollment: 24,541



Honolulu, Hawaii

Hawai'i Pacific University

ELS/Honolulu is located on the downtown campus of Hawai'i Pacific University. You have access to excellent facilities: libraries, computer labs, language partner programs, sports facilities, university clubs and more. Hawaii is a tropical paradise ideal for outdoor recreation and offers many cultural attractions and enjoyable nightlife.

RANKING: Ranked #87 – "Best Regional Universities - West" – *U.S. News & World Report, 2012*

COURSES: Intensive-Academic (\$1,730/session), Intensive-General (\$1,680/session), Semi-Intensive (\$1,410/session), American Explorer (\$1,350/session), TOEFL® Prep (starting at \$2,040), Executive Programs

OPTIONS AVAILABLE: Conversation Partner, Volunteer Experience

OFFICIAL TESTING: TOEFL® iBT, IELTS™

HOUSING OPTIONS: Student residence (off-campus) or homestay (ranges from \$785-\$1,560/session)

HOST INSTITUTION: Concurrent enrollment available, scholarships available, waive TOEFL® for ELS 112 graduates. Elective credits earned upon completion of the ELS Masters levels. Guaranteed scholarships available.

HOST INSTITUTION SAMPLE MAJORS INCLUDE: Computer Information Systems, Business, Nursing, Marine Biology, MBA, Oceanography, Travel Industry Management, TESOL

Honolulu, Hawaii 96813

•Urban •Private •Enrollment: 8,339



Begin Today!

You can meet people from a lot of different countries and you can hear many things about their cultures. I love ELS because I can make friends from other countries and learn English.
– VICTORIA, VENEZUELA



Houston, Texas

University of St. Thomas - Houston

ELS/Houston is on the University of St. Thomas - Houston (UST) campus. A major destination for international students, Houston is America's fourth largest city and the center of the world's energy industry. You can enjoy weekend visits to the National Air and Space Administration (NASA) Space Center Houston, Gulf of Mexico beaches and more.

RANKING: Ranked #30 – "Best Regional Universities - West" – *U.S. News & World Report, 2012*

COURSES: Intensive-Academic (\$1,730/session), Intensive-General (\$1,680/session), Semi-Intensive (\$1,410/session), American Explorer (\$1,350/session), TOEFL® Prep (starting at \$2,040), Executive Programs

OPTIONS AVAILABLE: University class visits and auditing (Level 107 and above)

OFFICIAL TESTING: TOEFL® iBT, IELTS™, TOEIC®

HOUSING OPTIONS: Student residence (off-campus) or homestay (ranges from \$865-\$950/session)

HOST INSTITUTION: Concurrent enrollment available, waive TOEFL® for ELS 112 graduates

HOST INSTITUTION SAMPLE MAJORS INCLUDE: Accounting, Bilingual/Bicultural Education, Business Administration, Marketing, Communications, Political Science, Psychology

Houston, Texas 77006

•Urban •Private •Enrollment: 3,520



Houston – Clear Lake, Texas

University of Houston - Clear Lake

ELS/Houston - Clear Lake is situated on the University of Houston - Clear Lake campus in a beautiful and safe area. We are located just 10 minutes from the NASA Space Center and 30 minutes from the excitement of downtown Houston and the beaches of Galveston Island. You can enjoy many cultural events, museums and the Houston Zoo!

RANKING: Ranked one of the "Best Regional Universities - West" – *U.S. News & World Report, 2012*

COURSES: Intensive-Academic (\$1,730/session), Intensive-General (\$1,680/session), Semi-Intensive (\$1,410/session), American Explorer (\$1,350/session), Executive Programs

OPTIONS AVAILABLE: University class visits and auditing

OFFICIAL TESTING: TOEFL® iBT

HOUSING OPTIONS: Student residence (off-campus) or homestay (ranges from \$800-\$960/session)

HOST INSTITUTION: Concurrent enrollment available, waive TOEFL® for ELS 112 graduates

HOST INSTITUTION SAMPLE MAJORS INCLUDE:

Accounting, Chemistry, Computer Information Systems, Environmental Science, Finance, History, Marketing
 Note: No entry at the Freshman (first year) or Sophomore (second year) levels. Courses offered at Bachelor's (upper level – Junior (third year)) and Senior (fourth year) and Master's levels

Houston, Texas 77085
 •Suburban •Public •Enrollment: 7,981



When I got to ELS for the first time, I was so worried about studying at a new place, but all of the teachers and other students were friendly.
 — SHIGEYUKI, JAPAN



Begin Today!

Indianapolis, Indiana

Indiana University - Purdue University Indianapolis

ELS/Indianapolis is located in downtown Indianapolis, just four blocks from the urban campus of Indiana University – Purdue University Indianapolis. It is just a 10-minute walk from campus to businesses, shopping and entertainment. Indianapolis attracts international students with its reputation for safety, a low cost of living, world-class sports and hospitality.

RANKING: Ranked one of the "Best National Universities" – *U.S. News & World Report, 2012*

COURSES: Intensive-Academic (\$1,730/session), Intensive-General (\$1,680/session), Semi-Intensive (\$1,410/session), American Explorer (\$1,350/session)

OPTIONS AVAILABLE: College Certificate Program, university class visits and auditing

OFFICIAL TESTING: TOEFL® iBT, IELTS™

HOUSING OPTIONS: Student residence (off-campus) or homestay (ranges from \$850-\$1,410/session)

HOST INSTITUTION: Concurrent enrollment available, scholarships available, waive TOEFL® for ELS 109 graduates (Associate and Bachelor's programs) or ELS 112 (Graduate programs)

HOST INSTITUTION SAMPLE MAJORS INCLUDE: Business, Marketing, Computer Animation, Convention Planning, Computer Science, Engineering, Health Services Management, Information Science

Indianapolis, Indiana 46204
 •Urban •Public •Enrollment: 30,300



Johnson City, Tennessee

East Tennessee State University

ELS/Johnson City offers study at a well-respected public university in a welcoming community nestled in the foothills of the Appalachian Mountains. Enjoy a range of recreational opportunities, such as hiking, skiing, rafting and golfing. East Tennessee State University is a major state institution with 112 undergraduate programs, seven graduate certificates, and 75 Master's and 13 Doctorate programs.

RANKING: Ranked one of the "Best National Universities" – *U.S. News & World Report, 2012*

COURSES: Intensive-Academic (\$1,730/session), Intensive-General (\$1,680/session), Semi-Intensive (\$1,410/session), American Explorer (\$1,350/session)

OFFICIAL TESTING: TOEFL® iBT

OPTIONS AVAILABLE: Concurrent enrollment for students in ELS Levels 110 – 112 available

HOUSING OPTIONS: Student residence (on-campus) or homestay (ranges from \$700-\$850/session)

HOST INSTITUTION: Waive TOEFL® for ELS 112 graduates

HOST INSTITUTION SAMPLE MAJORS INCLUDE:

Engineering Technology (biomedical, construction, industrial), Public Health (biostatistics, epidemiology), Nutrition and Foods, Exercise Science, Environmental Health, General Management, Bluegrass/Old-Time and Country Music

Johnson City, Tennessee 37614
 •Suburban •Public •Enrollment: 15,536



Begin Today!

I love ELS: They are very professional, organized, with many programs to choose from. Nice teachers and good friends make me feel like I'm at home.
 – KAMONRAT, THAILAND



La Verne, California

University of La Verne

La Verne is a safe and small city, just east of Los Angeles. It is near world-class surfing beaches and attractions such as Disneyland® and Universal Studios Hollywood® and renowned museums. The Center is located on the University of La Verne campus near a residential community that provides a friendly, small-town atmosphere.

RANKING: Ranked #152 – "Best National Universities" – *U.S. News & World Report, 2012*

COURSES: Intensive-Academic (\$1,730/session), Intensive-General (\$1,680/session), Semi-Intensive (\$1,410/session), American Explorer (\$1,350/session), TOEFL® Prep (starting at \$2,040)

OPTIONS AVAILABLE: University class visits and auditing, Conversation Partnerships, Volunteer Experience

OFFICIAL TESTING: TOEFL® iBT

HOUSING OPTIONS: Student residence (on-campus) or homestay (ranges from \$700-\$900/session)

HOST INSTITUTION: Concurrent enrollment available, scholarships available for undergraduates, waive TOEFL® for ELS 112 graduates

HOST INSTITUTION SAMPLE MAJORS INCLUDE:

Undergraduate: Business Administration, Communication, Psychology, Biology; Graduate: Master of Business Administration (MBA), Master of Education

La Verne, California 91750
 •Suburban •Private •Enrollment: 8,328



Laramie, Wyoming

University of Wyoming

ELS/Laramie is located on the attractive University of Wyoming (UW) campus. Laramie is a Western-style town with a reputation for safety, low cost of living, cleanliness and friendliness. ELS/Laramie is close to Rocky Mountain and Yellowstone National Parks. Outdoor activities include skiing, snowmobiling, white-water rafting and horseback riding.

RANKING: Ranked one of the "Top 400 World Universities" – *Times Higher Education*, 2012

COURSES: Intensive-Academic (\$1,730/session), Semi-Intensive (\$1,410/session), American Explorer (\$1,350/session)

OPTIONS AVAILABLE: Conversation Partner, university class visits and auditing

OFFICIAL TESTING: TOEFL® iBT

HOUSING OPTIONS: Student residence (on-campus) or homestay (ranges from \$810-\$1,100/session)

HOST INSTITUTION: Concurrent enrollment available, waive TOEFL® for ELS 112 graduates

HOST INSTITUTION SAMPLE MAJORS INCLUDE:

Agricultural Science/Economics, Cell Biology, Finance/Economics, Molecular Biology, Electrical and Computer Engineering, Chemical and Petroleum Engineering, Wildlife Management

Laramie, Wyoming 82071
•Rural •Public •Enrollment: 13,476



*Teachers are funny, friendly and helpful.
They care about your whole life, not only grades.*
– HANLIN, CHINA



Begin Today!

Las Vegas, Nevada

College of Southern Nevada

ELS/Las Vegas is located on the College of Southern Nevada West Charleston campus. You can choose from more than 215 degrees and certificates in a variety of career fields. Enjoy the world-class shopping, restaurants and entertainment offered along the famous Las Vegas strip, plus nearby Hoover Dam and Lake Mead.

RANKING: Ranked one of the "Best Regional Universities - West" – *U.S. News & World Report*, 2012

COURSES: Intensive-Academic (\$1,730/session), Semi-Intensive (\$1,410/session), American Explorer (\$1,350/session)

OPTIONS AVAILABLE: Conversation Partners and university class visits

OFFICIAL TESTING: TOEFL® iBT, IELTS™

HOUSING OPTIONS: Student residence (off-campus) or homestay (ranges from \$810-\$900/session)

HOST INSTITUTION: Waive TOEFL® for ELS 109 graduates

HOST INSTITUTION SAMPLE MAJORS INCLUDE: Hotel and Casino Management/Travel and Tourism, Food and Beverage Management/Culinary Arts, Computing and Information Technology, Graphic Design, Programming

Las Vegas, Nevada 89146
•Urban •Public •Enrollment: 43,799



Lubbock, Texas

Texas Tech University

ELS/Lubbock is just minutes away by foot or bus from Texas Tech University, one of the leading universities in the Midwest. Texas Tech University prides itself on being a major comprehensive research university that retains the sense of a smaller liberal arts institution. Lubbock has many music and art festivals each year, and you can enjoy history museums, sports, nightlife and Mackenzie Park.

RANKING: Ranked #160 – “Best National Universities” – *U.S. News & World Report, 2012*

COURSES: Intensive-Academic (\$1,730/session), Intensive-General (\$1,680/session), Semi-Intensive (\$1,410/session), American Explorer (\$1,350/session)

OFFICIAL TESTING: TOEFL® iBT in 2013

OPTIONS AVAILABLE: University class visits

HOUSING OPTIONS: Student residence (on-campus) or homestay (ranges from \$925-\$1,350/session)

HOST INSTITUTION: Waive TOEFL® for ELS 112 graduates

HOST INSTITUTION SAMPLE MAJORS INCLUDE:

Agribusiness, Business Administration, Communication Studies, Engineering, Geography, Microbiology, Mass Communications, Music, Nutritional Sciences and Dietetics

Lubbock, Texas 79409
•Rural •Public •Enrollment: 32,000



Begin Today!

ELS is an appropriate choice to study English since teachers and instructors here are friendly and well-educated. They are abundant in knowledge and good at solving our problems and giving advice to improve our English skills. – JAMES, CHINA



Melbourne, Florida

Florida Institute of Technology

ELS/Melbourne is located on the campus of the Florida Institute of Technology. It offers a state-of-the-art campus nestled in a tropical garden just minutes from Florida's beautiful white sand beaches. You can enjoy weekend visits to Walt Disney World Resorts®, Magic Kingdom®, EPCOT®, Disney's Hollywood Studios®, Animal Kingdom®, Universal Studios® and Kennedy Space Center.

RANKING: Ranked #164 – “Best National Universities” – *U.S. News & World Report, 2012*

COURSES: Intensive-Academic (\$1,730/session), Intensive-General (\$1,680/session), Semi-Intensive (\$1,410/session), American Explorer (\$1,350/session)

OFFICIAL TESTING: TOEFL® iBT, IELTS™

OPTIONS AVAILABLE: University class visits

HOUSING OPTIONS: Student residence (on-campus) or homestay (ranges from \$955-\$1,350/session)

HOST INSTITUTION: Waive TOEFL® for ELS 109 graduates

HOST INSTITUTION SAMPLE MAJORS INCLUDE:

Aquaculture, Astronomy, Business Administration, Computer Science, Industrial and Organizational Psychology, Ocean Engineering, Systems Engineering

Melbourne, Florida 32901
•Suburban •Private •Enrollment: 8,895



Miami, Florida

Barry University

ELS/Miami is located on campus of Barry University just 20 minutes from exciting downtown Miami. With year-round sunshine, blue ocean waters and white sand beaches, the area is known for its outdoor activities, such as snorkeling, jet skiing, water skiing and boating. The popular Florida tourist destinations of Orlando and Key West are close enough for weekend trips.

RANKING: Ranked one of the "Best National Universities" – *U.S. News & World Report, 2012*

COURSES: Intensive-Academic (\$1,730/session), Intensive-General (\$1,680/session), Semi-Intensive (\$1,410/session), American Explorer (\$1,350/session)

OFFICIAL TESTING: TOEFL® iBT

OPTIONS AVAILABLE: Volunteer Experience and university class visits

HOUSING OPTIONS: Student residence (both off-and-on-campus) or homestay (ranges from \$830-\$1,365/session)

HOST INSTITUTION: Waive TOEFL® for ELS 112 graduates

HOST INSTITUTION SAMPLE MAJORS INCLUDE:

Advertising, International Business, Marine Biology, Medical Technology, Photography, Physician Assistant Studies (Pre), Political Science

Miami, Florida 33161

•Suburban •Private •Enrollment: 8,690



I can make conversation with Americans and understand what they say. ELS made me feel comfortable in the USA.
— MIN WHOO "HO", SOUTH KOREA



Begin Today!

Milwaukee, Wisconsin

Marquette University

ELS/Milwaukee is located on the Marquette University campus. Marquette is a large private college that is ranked among the top universities. Milwaukee offers many outdoor activities including, sailing, windsurfing and kite surfing on Lake Michigan. Other options include diverse restaurants, cultural festivals, museums and professional sports.

RANKING: Ranked #49 – "Best Value Schools" – *U.S. News & World Report, 2012*

COURSES: Intensive-Academic (\$1,730/session), Intensive-General (\$1,680/session), Semi-Intensive (\$1,410/session), American Explorer (\$1,350/session)

OPTIONS AVAILABLE: University class visits

OFFICIAL TESTING: TOEFL® iBT

HOUSING OPTIONS: Student residence (on-campus) or homestay (ranges from \$680-\$815/session)

HOST INSTITUTION: Scholarships available, waive TOEFL® for ELS 112 graduates (some programs have additional ELS requirements)

HOST INSTITUTION SAMPLE MAJORS INCLUDE:

Biochemistry and Molecular Biology, Computer Science, Accounting, Business Administration, Finance, International Business, Marketing, Engineering

Milwaukee, Wisconsin 53233

•Urban •Private •Enrollment: 11,806



Nashville, Tennessee

Middle Tennessee State University

ELS/Nashville is located on the beautiful campus of Middle Tennessee State University. It is in the city of Murfreesboro, just south of Nashville. Celebrated worldwide as "Music City USA," Nashville is also known for its mild climate, the Grand Ole Opry and rich history. The area offers many dining experiences, arts centers and museums.

RANKING: Ranked one of the "Best National Universities" – *U.S. News & World Report, 2012*

COURSES: Intensive-Academic (\$1,730/session), Intensive-General (\$1,680/session), Semi-Intensive (\$1,410/session), American Explorer (\$1,350/session), Executive Programs

OFFICIAL TESTING: TOEFL® iBT, IELTS™

OPTIONS AVAILABLE: University class visits and auditing

HOUSING OPTIONS: Student residence (off-campus) or homestay (ranges from \$600-\$800/session)

HOST INSTITUTION: Concurrent enrollment available, waive TOEFL® for ELS 110 graduates (undergraduate admissions) and ELS 112 graduates (graduate admissions)

HOST INSTITUTION SAMPLE MAJORS INCLUDE: Business, Accounting, Engineering Technology, Aerospace, Mass Communication, Recording Industry, Ph.D. in Economics

Murfreesboro, Tennessee 37132
 •Suburban •Public •Enrollment: 26,400



Begin Today!

After nine months of studying at ELS, I didn't just finish Level 112. I also got a high score on the TOEFL® exam!
 – AHMED, SAUDI ARABIA



New Haven, Connecticut

University of New Haven

ELS/New Haven is located at the University of New Haven in West Haven, Connecticut. Known as a national educational and cultural hub, nearby New Haven is home to six colleges and universities, including Yale University. Close by are free music concerts and arts festivals at the New Haven Green. New York City and Boston are within easy reach.

RANKING: Ranked #110 – "Best Regional Universities - North" – *U.S. News & World Report, 2012*

COURSES: Intensive-Academic (\$1,730/session), Intensive-General (\$1,680/session), Semi-Intensive (\$1,410/session), American Explorer (\$1,350/session)

OFFICIAL TESTING: TOEFL® iBT, IELTS™

HOUSING OPTIONS: Student residence (off-campus) or homestay (ranges from \$915-\$1,170/session)

HOST INSTITUTION: Concurrent enrollment available, waive TOEFL®/IELTS™ for ELS 112 graduates

HOST INSTITUTION SAMPLE MAJORS INCLUDE: Marine Biology, Business Administration, Criminal Justice, Computer Science Engineering, Hotel and Restaurant Management, Information Technology, Music and Sound Recording

West Haven, Connecticut 06516
 •Suburban •Private •Enrollment: 6,000



New York (Manhattan), New York

The Juilliard School (summer only)

ELS/Juilliard is located at the prestigious Juilliard School at Lincoln Center for the Performing Arts. It is in the cultural heart of New York City. Lincoln Center is the world's largest performing arts center. In addition to the Juilliard School, it is home to many resident arts organizations. These include The Film Society of Lincoln Center, The Metropolitan Opera, The New York City Ballet, The New York Philharmonic and The School of American Ballet. You can attend cultural events at Lincoln Center.

You can also explore the many sights and attractions that make New York City the most exciting city in the world!

COURSES: Summer @ The Juilliard School (ranges from \$1,450-\$1,550)

OPTIONS AVAILABLE: Private music, voice or dance lessons nearby

HOUSING OPTIONS: Student residence (on-campus) or homestay (ranges from \$1,150-\$1,850/session)



New York, New York 10023
•Urban



Thanks to the ELS family, I improved my English. I learned a lot with everybody and most important was that I made friends forever with students from all around the world. — IVIRISS, ANGOLA



Begin Today!

New York (Manhattan), New York

Adelphi University - Manhattan Center

ELS/Manhattan is located on the urban campus of Adelphi University, which borders Tribeca and the trendy Soho district. You have access to cultural resources, such as world-class art, theatre, dining and shopping. The culture and creativity of our neighborhood can only be experienced in America's largest and most diverse city

RANKING: Ranked #152 – "Best National Universities" – U.S. News & World Report, 2012

COURSES: Intensive-Academic (\$1,730/session), Intensive-General (\$1,680/session), Semi-Intensive (\$1,410/session), American Explorer (\$1,350/session), TOEFL® Prep (starting at \$2,040), Business English (\$1,680/session), Executive Programs

OFFICIAL TESTING: TOEFL® iBT, IELTS™, TOEIC®

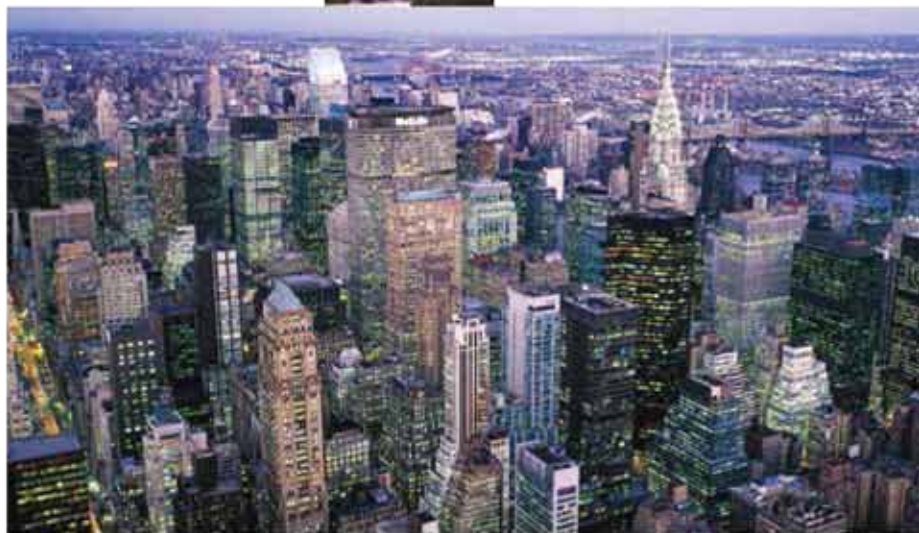
OPTIONS AVAILABLE: College Visits, Volunteer Experience

HOUSING OPTIONS: Student residence (off-campus) or homestay (ranges from \$1,285-\$1,985/session)

HOST INSTITUTION: Class observations available, scholarships available, waive TOEFL® for ELS 112 graduates

HOST INSTITUTION SAMPLE MAJORS INCLUDE: Business, Bilingual/Bicultural Education, Counseling Psychology, Health/Physical Education, School Psychology, TESOL, MBA

New York, New York 10013
•Urban •Private •Enrollment: 7,922



New York (Riverdale), New York

College of Mount Saint Vincent

ELS/Riverdale is located on the beautiful campus of the College of Mount Saint Vincent (CMSV) in the prestigious Riverdale section. CMSV is located in a safe, residential community that offers an ideal setting for study, yet is less than 40 minutes away from Manhattan by express bus or subway.

RANKING: Ranked #25 – “Best Regional Universities - North” – *U.S. News & World Report, 2012*

COURSES: Intensive-Academic (\$1,730/session), Intensive-General (\$1,680/session), Semi-Intensive (\$1,410/session), American Explorer (\$1,350/session), Executive Programs

OFFICIAL TESTING: TOEFL® iBT

OPTIONS AVAILABLE: Conversation Partner, College Certificate Programs, Volunteer Experience, university class visits and auditing

HOUSING OPTIONS: Student residence (on-campus) or homestay (ranges from \$1,100-\$1,650/session)

HOST INSTITUTION: College credit for ELS, concurrent enrollment available, scholarships available, waive TOEFL® for ELS 112 graduates

HOST INSTITUTION SAMPLE MAJORS INCLUDE: Accounting, Business, Computer Science, Nursing, Radio/Television Broadcasting Technology, Psychology, MBA

Riverdale, New York 10471
•Suburban •Private •Enrollment: 1,800



Begin Today!

I enjoy learning at ELS because of the way they teach and how they are organized.
– NICOLA, ITALY



Oklahoma City, Oklahoma

Oklahoma City University

ELS/Oklahoma City presents many study options for you and is located on the Oklahoma City University campus. Oklahoma City is safe and friendly with one of the lowest costs of living in the USA. Entertainment and arts districts, professional sports and concert venues are nearby.

RANKING: Ranked #29 – “Best Regional Universities - West” – *U.S. News & World Report, 2012*

COURSES: Intensive-Academic (\$1,730/session), Intensive-General (\$1,680/session), Semi-Intensive (\$1,410/session), American Explorer (\$1,350/session), Executive Programs

OPTIONS AVAILABLE: Conversation Partner, university class visits and auditing

OFFICIAL TESTING: TOEFL® iBT, TOEIC®, IELTS™

HOUSING OPTIONS: Student residence (on-campus) or homestay (ranges from \$500-\$800/session)

HOST INSTITUTION: College credit for ELS, concurrent enrollment available, scholarships available, waive TOEFL® for ELS 112 graduates

HOST INSTITUTION SAMPLE MAJORS INCLUDE: Business Administration (MBA), Computer Science, Music, Biology (Pre-Med), TESOL, Accounting (MSA), Economics, Finance

Oklahoma City, Oklahoma 73106
•Urban •Private •Enrollment: 3,800



Orlando, Florida

Stetson University

ELS/Orlando is located at the Stetson University Center in the town of Celebration, Florida, a suburb of Orlando. It is minutes from the area's theme parks, including Magic Kingdom®, EPCOT®, Disney's Animal Kingdom®, Universal Studios Florida® and Sea World®. It is about one hour from Kennedy Space Center, as well as both the Atlantic and Gulf coast beaches.

RANKING: Ranked #3 – “Best Regional Universities - South” – *U.S. News & World Report, 2012*

COURSES: Intensive-Academic (\$1,730/session), Intensive-General (\$1,680/session), Semi-Intensive (\$1,410/session), American Explorer (\$1,350/session), Executive Programs

OFFICIAL TESTING: TOEFL® iBT, IELTS™

OPTIONS AVAILABLE: University class visits and auditing

HOUSING OPTIONS: Student residence (off-campus) or homestay (ranges from \$1,065-\$2,280/session)

HOST INSTITUTION: Waive TOEFL® for ELS 112 graduates

HOST INSTITUTION SAMPLE MAJORS INCLUDE: Business Administration, Marriage and Family Therapy, School Counseling and Educational Leadership, Information Technology, Music

Celebration, Florida 34747

•Suburban •Private •Enrollment: 3,696



I really like this school because we have a lot of interesting lessons, where we practice our language skills, learn grammar and writing skills. Studying here is fun! – ROMAN, RUSSIA



Begin Today!

Philadelphia, Pennsylvania

Saint Joseph's University

ELS/Philadelphia is located close to downtown Philadelphia on the beautiful, safe campus of Saint Joseph's University. Philadelphia is a modern yet historic city, offering a lively experience in American culture and a wide range of restaurants, world-class museums and recreational activities.

RANKING: Ranked #8 – “Best Regional Universities - North” – *U.S. News & World Report, 2012*

COURSES: Intensive-Academic (\$1,730/session), Intensive-General (\$1,680/session), Semi-Intensive (\$1,410/session), American Explorer (\$1,350/session), TOEFL® Prep (starting at \$2,040), Executive Programs

OFFICIAL TESTING: TOEFL® iBT, TOEIC®

OPTIONS AVAILABLE: Conversation Partner

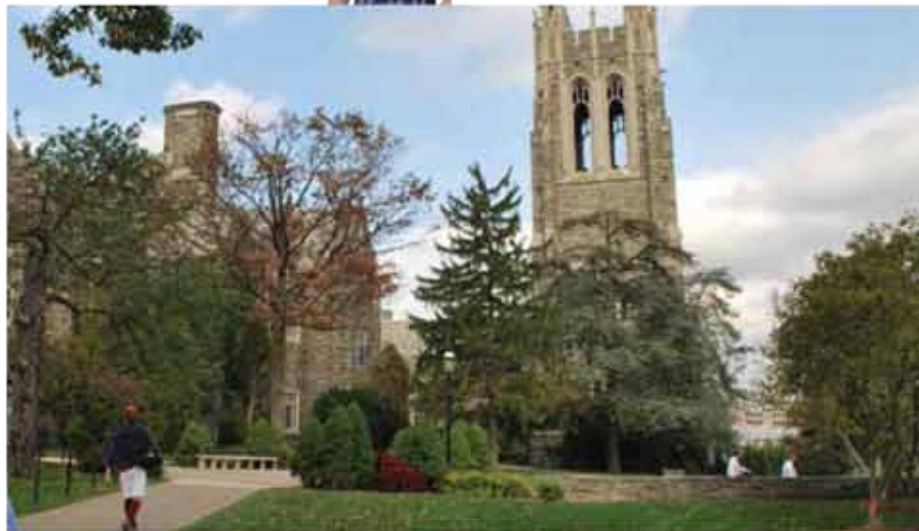
HOUSING OPTIONS: Student residence (on-campus) or homestay (ranges from \$1,050-\$1,145/session)

HOST INSTITUTION: College credit for ELS, scholarships available, waive TOEFL® for ELS 112 graduates (graduate and undergraduate programs)

HOST INSTITUTION SAMPLE MAJORS INCLUDE: Education, International Business, Pharmaceutical Marketing, Physical Therapy, International Relations, Computer Science, International Marketing

Philadelphia, Pennsylvania 19131

•Suburban •Private •Enrollment: 8,800



Pittsburgh, Pennsylvania

Point Park University

ELS/Pittsburgh is located on the Point Park University campus, where you have access to theater, arts and entertainment. Pittsburgh is home to many world-class educational institutions. Consistently ranked in *Rand McNally's* "Most Livable Cities in North America," Pittsburgh is safe, inexpensive and friendly.

RANKING: Ranked #116 – "Best Regional Universities - North" – *U.S. News & World Report*, 2012

COURSES: Intensive-Academic (\$1,730/session), Intensive-General (\$1,680/session), Semi-Intensive (\$1,410/session), American Explorer (\$1,350/session)

OFFICIAL TESTING: TOEFL® iBT, IELTS™

OPTIONS AVAILABLE: Conversation Partner, university class visits and auditing

HOUSING OPTIONS: Student residence (on-campus) or homestay (ranges from \$770-\$800/session)

HOST INSTITUTION: Concurrent enrollment available, scholarships available for ELS graduates, waive TOEFL® for ELS 112 graduates (Bachelor's and Graduate programs)

HOST INSTITUTION SAMPLE MAJORS INCLUDE: Business Management, Economics and Finance, Film/Video Production, MBA, MS in Engineering Management, MA in Organizational Leadership (No GMAT®/GRE® required for most Grad programs)

Pittsburgh, Pennsylvania 15222
•Urban •Private •Enrollment: 3,900



Begin Today!

There are many opportunities to speak English with other students and to learn other cultures. – REX, CHINA



Plymouth, New Hampshire

Plymouth State University

ELS/Plymouth is located on the campus of Plymouth State University, recently listed as one of the "greenest" universities in the USA. The small New England town of Plymouth is surrounded by beautiful scenic landscape. Nearby ski resorts, lakes and mountains offer exciting outdoor winter and summer sports.

RANKING: Ranked #125 – "Best Regional Universities - North" – *U.S. News & World Report*, 2012

COURSES: Intensive-Academic (\$1,730/session), Semi-Intensive (\$1,410/session), American Explorer (\$1,350/session)

OFFICIAL TESTING: TOEFL® iBT

OPTIONS AVAILABLE: Conversation Partner, university class visits

HOUSING OPTIONS: Student residence (on-campus) or homestay (ranges from \$900-\$940/session)

HOST INSTITUTION: Concurrent enrollment available, application fee waived for qualified ELS students, scholarships available, waive TOEFL® for ELS 112 graduates

HOST INSTITUTION SAMPLE MAJORS INCLUDE: Art, Athletic Training, Biotechnology, Business Administration, Computer Science, Criminal Justice, Environmental Biology, Meteorology

Plymouth, New Hampshire 03264-1595
•Suburban •Public •Enrollment: 7,600



Pocatello, Idaho

Idaho State University

ELS/Pocatello is situated on the 350-hectare campus of Idaho State University (ISU). A public university, ISU is located in mountain-surrounded Pocatello, Idaho. The city offers a low cost of living and a safe, family-friendly environment. Activities include mountain biking, river rafting, hiking, skiing, horseback riding and camping through ISU's Outdoor Adventure Center.

RANKING: Ranked one of the "Best National Universities" – *U.S. News & World Report, 2012*

COURSES: Intensive Academic (\$1,730/session), Semi-Intensive (\$1,410/session), American Explorer (\$1,350/session)

OPTIONS AVAILABLE: Conversation Partner, university class visits and auditing

OFFICIAL TESTING: TOEFL® iBT

HOUSING OPTIONS: Student residence (on-campus) or homestay (ranges from \$740-\$965/session)

HOST INSTITUTION: Concurrent enrollment available, college credit for ELS, waive TOEFL® for ELS 112 graduates

HOST INSTITUTION SAMPLE MAJORS INCLUDE: Finance, Business Administration, Criminal Justice/Law Enforcement, Law (Pre), Medicine (Pre), Nursing (Pre), Marketing, Mass Communications, Media Studies

Pocatello, Idaho 83201
 •Rural •Public •Enrollment: 15,575



*I have really enjoyed studying at ELS.
 ELS has wonderful teachers and friendly staff.
 – YAFENG, CHINA*



Begin Today!

Portland, Oregon

Concordia University

ELS/Portland, located on the lovely Concordia University campus, is less than 30 minutes from downtown Portland. The fourth largest city on the West Coast, Portland is also the most affordable, with the lowest housing costs and no sales tax (Happy shopping!). *Forbes* magazine voted Portland the second "Safest City in the USA" and "America's Best Downtown." Students also enjoy fun activities at Mount Hood, the Oregon beaches and Seattle.

RANKING: Ranked #88 – "Best Regional Universities - West" – *U.S. News & World Report, 2012*

COURSES: Intensive-Academic (\$1,730/session), Intensive-General (\$1,680/session), Semi-Intensive (\$1,410/session), American Explorer (\$1,350/session)

OPTIONS AVAILABLE: Conversation Partner, Volunteer Experience, university class visits and auditing

OFFICIAL TESTING: TOEFL® iBT, IELTS™

HOUSING OPTIONS: Student residence (on-campus) or homestay (ranges from \$845-\$850/session)

HOST INSTITUTION: Concurrent enrollment available, scholarships available, waive TOEFL® for ELS 112 graduates

HOST INSTITUTION SAMPLE MAJORS INCLUDE: Biology, Business Administration, Chemistry, Education, Marketing, Exercise and Sports Science, Nursing, M.Ed. TESOL, MBA

Portland, Oregon 97211
 •Urban •Private •Enrollment: 3,000



Rochester, New York

The State University of New York
The College at Brockport

OPENING MARCH 2013

ELS/Rochester will be located on the campus of State University of New York The College at Brockport. The city of Brockport is a small college town. There are many restaurants, coffee shops and more. Brockport is also within traveling distance of many exciting destinations, including Rochester, Niagara Falls, Toronto and New York City.

RANKING: Among the top 100 "Best Value" public colleges and universities – *Kiplinger's*, 2012

COURSES: Intensive-Academic (\$1,730/session), Intensive-General (\$1,680/session), Semi-Intensive (\$1,410/session), American Explorer (\$1,350/session)

OFFICIAL TESTING: TOEFL® iBT in 2013

OPTIONS AVAILABLE: Conversation Partner, university class visits and auditing

HOUSING OPTIONS: Student residence (on-campus) or homestay (ranges from \$850-\$1,250/session)

HOST INSTITUTION: Concurrent enrollment access to university facilities, waive TOEFL® for ELS 112 graduates

HOST INSTITUTION SAMPLE MAJORS INCLUDE:

Accounting, Biochemistry, Business, Computer Information Systems, Dance, Exercise Science, International Business & Economics, Medical Technology

Brockport, New York 14420
•Rural •Public •Enrollment: 8,400



Begin Today!

I loved studying at ELS. The teachers are not boring; they are always enthusiastic and ready to help you.
— LUCCAS, BRAZIL



Ruston, Louisiana

Louisiana Tech University

ELS/Ruston is located on the beautiful campus of Louisiana Tech University. LA Tech, a Tier-One national university, has a diverse student population. Activities in Ruston include water skiing, hiking, biking, fishing and many festivals. You can also enjoy weekend visits to New Orleans and Dallas.

RANKING: Ranked #96 – "100 Best Value in Public Colleges" – *Kiplinger*, 2012

COURSES: Intensive-Academic (\$1,730/session), Semi-Intensive (\$1,410/session), American Explorer (\$1,350/session)

OFFICIAL TESTING: TOEFL® iBT

OPTIONS AVAILABLE: Conversation Lunch Hour, Interactive Conversations with American students in LA Tech classrooms

HOUSING OPTIONS: Student residence (on-campus) or homestay (ranges from \$635-\$800/session)

HOST INSTITUTION: Waive TOEFL® for ELS 112 graduates, offers conditional acceptance with no GRE® or GMAT®

HOST INSTITUTION SAMPLE MAJORS INCLUDE:

Architecture, Aviation, Business Administration, Engineering-Biomedical, Chemical, Civil, Electrical, Industrial, Mechanical; Engineering and Technology Management, Nanotechnology

Ruston, Louisiana 71272
•Rural •Public •Enrollment: 11,000



San Antonio, Texas

University of the Incarnate Word

ELS/San Antonio is located on the campus of the University of the Incarnate Word. The city is a thriving cultural center with a laid-back atmosphere and friendly people. San Antonio has many celebrations, including Fiesta, Rodeo, Cinco de Mayo and the Festival of Mud. You also can enjoy the River Walk's sidewalk cafés, nightclubs and boutiques.

RANKING: Ranked #63 – "Best Regional Universities - West" – *U.S. News & World Report, 2012*

COURSES: Intensive-Academic (\$1,730/session), Intensive-General (\$1,680/session), Semi-Intensive (\$1,410/session), American Explorer (\$1,350/session)

OPTIONS AVAILABLE: Conversation Partner, university class visits and auditing

OFFICIAL TESTING: TOEFL® iBT, IELTS™

HOUSING OPTIONS: Student residence (on-campus) or homestay (ranges from \$790-\$845/session)

HOST INSTITUTION: Concurrent enrollment available, scholarships available, waive TOEFL® for ELS 109 graduates

HOST INSTITUTION SAMPLE MAJORS INCLUDE: Art History, Athletic Training/Sports Medicine, Fashion Management, Interior Design, International Business, Nursing, Political Science, MBA

San Antonio, Texas 78209
 •Suburban •Private •Enrollment: 8,400



You can share experiences with a lot of people. Teachers are very fun. We have a lot of extra fun activities. You meet people from all over the world. – OLGA, COLOMBIA



Begin Today!

San Diego, California

City Center

Southern California is home to ELS/San Diego, located near downtown San Diego's entertainment and shopping district. You can enjoy day trips to the beach, the world famous San Diego Zoo and Sea World®, or spend a weekend exploring Universal Studios Hollywood® or Disneyland®. San Diego's very mild climate is considered by many to be the best in the United States. That makes the area ideal for the many festivals held throughout the year. There are also many restaurants, museums, art galleries, theatres, parks and professional sports.

COURSES: Intensive-Academic (\$1,730/session), Intensive-General (\$1,680/session), Semi-Intensive (\$1,410/session), American Explorer (\$1,350/session), TOEFL® Prep (starting at \$2,040), Executive Programs

OPTIONS AVAILABLE: Conversation Partner, Volunteer Experience

OFFICIAL TESTING: TOEFL® iBT, IELTS™

HOUSING OPTIONS: Student residence hotel (off-campus) or homestay (ranges from \$836-\$1,015/session)

San Diego, California 92101
 •Urban



San Francisco - Downtown, California

Golden Gate University

ELS/San Francisco - Downtown is located on the city campus of Golden Gate University (GGU). The "City by the Bay" is a center of culture with a distinct international flavor. You can visit Alcatraz and the Golden Gate Bridge. Other activities include sporting events or day trips to Muir Woods, Stinson Beach, Monterey Bay, or the famous Napa and Sonoma Valley wine country. Weekend trips to Yosemite, Las Vegas and the Grand Canyon are also popular.

RANKING: Ranked one of the "Best Regional Universities - West," *U.S. News & World Report, 2012*

COURSES: Intensive-Academic (\$1,730/session), Intensive-General (\$1,680/session), Semi-Intensive (\$1,410/session), American Explorer (\$1,350/session), Business English (\$1,680/session), Executive Programs

OPTIONS AVAILABLE: Volunteer Experience

OFFICIAL TESTING: TOEFL® iBT, IELTS™

HOUSING OPTIONS: Student hotel (off-campus) or homestay (ranges from \$890-\$1,140/session)

HOST INSTITUTION: Waive TOEFL® for ELS 112 graduates

HOST INSTITUTION SAMPLE MAJORS INCLUDE: Accounting, Business, Information Technology, Psychology

San Francisco, California 94105
 •Urban •Private •Enrollment: 4,775



Begin Today!

I have enjoyed the conversation elective the most so far – you get to speak to many people, so I now know lots of people from all over the world. – ARI, JAPAN



San Francisco - North Bay, California

Dominican University of California

ELS/San Francisco - North Bay is located on the campus of Dominican University of California (DUC). Just north of San Francisco, the city of San Rafael is safe and beautiful. The Center is within walking distance of DUC. The area offers outdoor activities, such as hiking, golf, swimming and sailing.

RANKING: Ranked #37 – "Best Regional Universities - West" – *U.S. News & World Report, 2012*

COURSES: Intensive-Academic (\$1,730/session), Intensive-General (\$1,680/session), Semi-Intensive (\$1,410/session), American Explorer (\$1,350/session), TOEFL® Prep (starting at \$2,040)

OPTIONS AVAILABLE: Conversation Partner, Volunteer Experience, university class visits and auditing.

OFFICIAL TESTING: TOEFL® iBT

HOUSING OPTIONS: Student residence (on-campus) or homestay (ranges from \$1,105-\$1,385/session)

HOST INSTITUTION: Concurrent enrollment available, college credit for ELS, waive TOEFL® for ELS 112 graduates

HOST INSTITUTION SAMPLE MAJORS INCLUDE: Communications, Biological Sciences, Health Sciences/Pre-occupational Therapy, International Studies, Business, MBA in Global Management, Green MBA, Education

San Rafael, California 94901
 •Suburban •Private •Enrollment: 2,200



Santa Barbara, California

City Center

ELS/Santa Barbara is located in downtown Santa Barbara, a friendly town on the Southern California coast. Known as the "American Riviera," Santa Barbara is famous for its sunny weather, Spanish-style architecture and lively college-town spirit. The city is pedestrian-friendly and offers excellent public transportation. Santa Barbara is one of the safest cities in California, and its amazing mix of mountains and beaches include everything from big city culture to outdoor adventures.

COURSES: Intensive-Academic (\$1,730/session), Intensive-General (\$1,680/session), Semi-Intensive (\$1,410/session), American Explorer (\$1,350/session), TOEFL® Prep (starting at \$2,040), Executive Programs

OPTIONS AVAILABLE: Volunteer Experience

OFFICIAL TESTING: TOEFL® iBT, IELTS™

HOUSING OPTIONS: Student residence (off-campus) or homestay (ranges from \$1,055-\$1,270/session)



Santa Barbara, California 93101
•Urban



The course is giving me confidence with my English.
— DEOK, SOUTH KOREA



Begin Today!

Santa Cruz, California

Center with University Access

ELS/Santa Cruz is located in downtown Santa Cruz. The young and vibrant coastal city is situated on beautiful Monterey Bay. The Center is surrounded by great shopping, restaurants, movie theaters, coffee shops and music venues. It is home to the West Coast's only seaside amusement park, the Santa Cruz Beach Boardwalk. Popular recreational activities that you can enjoy include surfing, mountain biking, hiking, camping and walking on the beach. You will have access to the libraries and recreational facilities of the University of California Santa Cruz.

COURSES: Intensive-Academic (\$1,730/session), Intensive-General (\$1,680/session), Semi-Intensive (\$1,410/session), American Explorer (\$1,350/session)

OPTIONS AVAILABLE: Conversation Partner, concurrent enrollment available at University of California Santa Cruz through the UCSC Extension.

OFFICIAL TESTING: TOEFL® iBT

HOUSING OPTIONS: Student residence (off-campus) or homestay (ranges from \$650-\$1,000/session)



Santa Cruz, California 95060
•Suburban

Santa Monica, California City Center

ELS/Santa Monica is located in downtown Santa Monica. It is conveniently close to all the attractions of metropolitan Los Angeles. With its palm tree-lined walkways and breathtaking sunsets, Santa Monica enjoys a warm and mild climate year-round. This diverse and artistic community maintains the charming, relaxed atmosphere of a small town. The popular Santa Monica Pier and colorful Third Street Promenade, with sidewalk singers, artists, movie theaters, shops and restaurants, are located only blocks away. Santa Monica also has many outdoor activities for sports enthusiasts, including surfing, skateboarding, biking and swimming.

COURSES: Intensive-Academic (\$1,730/session), Intensive-General (\$1,680/session), Semi-Intensive (\$1,410/session), American Explorer (\$1,350/session), Executive Programs

OPTIONS AVAILABLE: Volunteer Experience

OFFICIAL TESTING: TOEFL® iBT, IELTS™

HOUSING OPTIONS: Student residence (off-campus) or homestay (ranges from \$1,115-\$1,185/session)



Santa Monica, California 90401
•Suburban



Begin Today!

*One day I would like to run my own company.
I want to get experiences before I start my
company. English can increase my possibilities.*
— KEISUKE, JAPAN



Seattle, Washington City Center

ELS/Seattle is located in the trendy Capitol Hill district of the city. With a backdrop of majestic Mount Rainier and the Cascade and Olympic Mountains, ELS/Seattle is surrounded by unique boutiques, quirky coffee shops and neighborhood cafés. ELS is located within walking distance of Pike Place Market, Pacific Place Shopping Center and the Broadway district. Local attractions include the Gorge Amphitheater, Waterfront Pier and the famous Seattle Space Needle. The magnificent Pacific Coast, Portland and Vancouver are just a few hours away.

COURSES: Intensive-Academic (\$1,730/session), Intensive-General (\$1,680/session), Semi-Intensive (\$1,410/session), American Explorer (\$1,350/session), TOEFL® Prep (starting at \$2,040), Executive Programs, CELTA (\$2,475/session)

OPTIONS AVAILABLE: Volunteer Experience, CELTA Teaching Certificate

OFFICIAL TESTING: TOEFL® iBT, TOEIC®, IELTS™

HOUSING OPTIONS: Student residence (off-campus) or homestay (ranges from \$890-\$960/session)



Seattle, Washington 98122
•Urban

Silicon Valley, California

Center with University Access

ELS/Silicon Valley is located in Cupertino in the middle of Silicon Valley, less than an hour south of San Francisco. The city of Cupertino is a wealthy and safe suburban city of 58,000 people. The region is home to many of the world's largest technology corporations. These include Apple, Google, Facebook and Microsoft. Silicon Valley is home to many ELS partner schools, including De Anza College, which is located just across the street. There are many entertainment choices, including cultural festivals, shopping malls, restaurants, theaters, golf courses and museums.

COURSES: Intensive-Academic (\$1,730/session), Intensive-General (\$1,680/session), Semi-Intensive (\$1,410/session), American Explorer (\$1,350/session)

OPTIONS AVAILABLE: Conversation Partner, Volunteer Experience

OFFICIAL TESTING: TOEFL® iBT

HOUSING OPTIONS: Student residence (off-campus) or homestay (ranges from \$850-\$1,660/session)



Cupertino, California 95014
•Suburban



I love lots of things about ELS's location, especially the weather, the atmosphere, the beaches and the lifestyle. I have made friends from all over the world.
— LEILA, SWITZERLAND



Begin Today!
ELS.edu/CounselorBE

St. Louis, Missouri

University of Missouri – St. Louis

ELS/St. Louis is located on the beautiful campus of the University of Missouri – St. Louis. A friendly Midwestern city of 2.5 million people, St. Louis offers a low cost of living. It is well known for its major league baseball, NFL football and ice hockey, the Gateway Arch, Anheuser-Busch Brewery and more.

RANKING: Ranked one of the "Best National Universities" – U.S. News & World Report, 2012

COURSES: Intensive-Academic (\$1,730/session), Intensive-General (\$1,680/session), Semi-Intensive (\$1,410/session), American Explorer (\$1,350/session)

OPTIONS AVAILABLE: University class visits and auditing

OFFICIAL TESTING: TOEFL® iBT, IELTS™

HOUSING OPTIONS: Student residence (on-campus) or homestay (ranges from \$770-\$845/session)

HOST INSTITUTION: Concurrent enrollment available, waive TOEFL® for undergraduate applicants for ELS 112 graduates

HOST INSTITUTION SAMPLE MAJORS INCLUDE: Biology, Business Administration, Economics, Chemistry, Computer Science, Criminology, Education, Nursing, Management Information, Physics, Psychology



St. Louis, Missouri 63121
•Suburban •Public •Enrollment: 16,500

St. Paul - Minneapolis, Minnesota

University of St. Thomas - Minnesota

ELS/St. Paul is situated on the University of St. Thomas - Minnesota campus. It is in a residential area close to downtown St. Paul - Minneapolis. The two cities have a reputation for safety, cleanliness and low-cost living in a friendly Midwestern environment. The Mall of America retail complex is close by.

RANKING: Ranked #115 - "Best National Universities" - U.S. News & World Report, 2012

COURSES: Intensive-Academic (\$1,730/session), Intensive-General (\$1,680/session), Semi-Intensive (\$1,410/session), American Explorer (\$1,350/session), Executive Programs

OPTIONS AVAILABLE: Conversation Partner, university class visits and auditing

OFFICIAL TESTING: TOEFL® iBT, TOEIC®, IELTS™

HOUSING OPTIONS: Student residence (on-campus) or homestay (ranges from \$1,050-\$1,450/session)

HOST INSTITUTION: Concurrent enrollment available, scholarships available, waive TOEFL® for ELS 112 graduates

HOST INSTITUTION SAMPLE MAJORS INCLUDE:

Undergraduate: Electrical and Mechanical Engineering, Computer Science, Communication and Journalism, Biology; Graduate: Software Systems, Engineering, Education



St. Paul, Minnesota 55105
•Urban •Private •Enrollment: 10,851

Begin Today!

This experience has been very useful for me. You learn English so quickly because you have to speak with American students and non-American students.
- ALESSANDRA, VENEZUELA



St. Petersburg, Florida

Eckerd College

ELS/St. Petersburg is located on the beautiful waterfront campus of Eckerd College. St. Petersburg is situated on Florida's tropical west coast. It is well known for its beaches and mild climate. You can enjoy trips to Magic Kingdom®, EPCOT®, Sea World®, Busch Gardens® and Universal Studios Florida®.

RANKING: Ranked one of the "Best Business Schools," Fiske Guide to Colleges, 2012

COURSES: Intensive-Academic (\$1,730/session), Intensive-General (\$1,680/session), Semi-Intensive (\$1,410/session), American Explorer (\$1,350/session), Executive Programs

OFFICIAL TESTING: TOEFL® iBT, IELTS™

OPTIONS AVAILABLE: Conversation Partner, College Certificate Programs, university class visits and auditing

HOUSING OPTIONS: Student residence (on-campus) or homestay (ranges from \$1,090-\$1,365/session)

HOST INSTITUTION: College credit for ELS, waive TOEFL® for ELS 112 graduates

HOST INSTITUTION SAMPLE MAJORS INCLUDE:

American Studies, East Asian Studies, Psychology, Ecology, Environmental Studies, International Business, International Relations and Global Studies, Marine Science



St. Petersburg, Florida 33711
•Suburban •Private •Enrollment: 1,815

Tacoma, Washington

Bates Technical College

ELS/Tacoma is located on the friendly, downtown campus of Bates Technical College. Tacoma is situated 50 kilometers south of Seattle, along the shores of Commencement Bay, at the foot of Mount Rainier. It is home to many cultural attractions, restaurants and parks. Tacoma also is a gateway to popular activities, including skiing, hiking and whale-watching.

RANKING: "Top 10 School for Audio and Visual Communication Technology" – *Education-Portal.com*

COURSES: Intensive-Academic (\$1,730/session), Intensive-General (\$1,680/session), Semi-Intensive (\$1,410/session), American Explorer (\$1,350/session)

OFFICIAL TESTING: TOEFL® iBT in 2013

OPTIONS AVAILABLE: College Class Visits, Conversation Partner, concurrent enrollment available

HOUSING OPTIONS: Student residence (off-campus) or homestay (ranges from \$750-\$890/session)

HOST INSTITUTION: Concurrent enrollment available, waive TOEFL® for ELS 109 graduates

HOST INSTITUTION SAMPLE MAJORS INCLUDE: Culinary Arts, Fire Protection, Computer Science, Denturist (clinical dental technician), Machinist, Broadcast Production

Tacoma, Washington 98405
•Urban •Public •Enrollment: 14,000



Even [after graduation] I can still walk in, ask for help and they are still here for me. I felt like I was a part of the family.
— VANESSA, COTE D'IVOIRE



Begin Today!

Tampa, Florida

The University of Tampa

ELS/Tampa is located at The University of Tampa, near beaches, exciting nightlife and world-class shopping. The beautiful campus is nestled on the banks of the Hillsborough River and has some of the best sports facilities in the nation for a school of its size.

RANKING: Ranked #23 – "Best Regional Colleges - South" – *U.S. News & World Report, 2012*

COURSES: Intensive-Academic (\$1,730/session), Executive Programs (Please note: Only students who have already applied for admission, have been conditionally accepted or are concurrently applying for admission to UT may enroll in the ELS program.)

OPTIONS AVAILABLE: University class visits and auditing

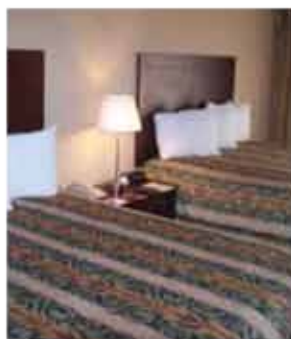
OFFICIAL TESTING: TOEFL®, IELTS™

HOUSING OPTIONS: Student residence (off-campus) or homestay (ranges from \$1,090-\$3,310/session)

HOST INSTITUTION: Concurrent enrollment available, waive TOEFL® for ELS 112 graduates

HOST INSTITUTION SAMPLE MAJORS INCLUDE: More than 120 areas of undergraduate study, plus graduate studies including Master's degrees in Teaching, Education, Business Administration, Accounting, Marketing, Nursing

Tampa, Florida 33606
•Suburban •Private •Enrollment: 6,700



Teaneck, New Jersey

Fairleigh Dickinson University

ELS/Teaneck is situated on the campus of Fairleigh Dickinson University a short distance from the city center. Just 30 minutes from the excitement of New York City, Teaneck is located in a beautiful and safe area. Teaneck's ethnically diverse community is a welcoming environment for international students.

RANKING: Ranked #81 – "Best Regional Universities - North" – *U.S. News & World Report, 2012*

COURSES: Intensive-Academic (\$1,730/session), Intensive-General (\$1,680/session), Semi-Intensive (\$1,410/session), American Explorer (\$1,350/session), TOEFL® Prep (starting at \$2,040)

OFFICIAL TESTING: TOEFL® iBT, IELTS™

OPTIONS AVAILABLE: University class visits and auditing

HOUSING OPTIONS: Student residence (on-campus) or homestay (ranges from \$1,010-\$1,325/session)

HOST INSTITUTION: Concurrent enrollment available, scholarships available, waive TOEFL®/IELTS™ for ELS 112 graduates, application fee waived for ELS students

HOST INSTITUTION SAMPLE MAJORS INCLUDE: Business Management, Computer Science, Marketing, Mechanical Engineering, Multilingual Education, Information Technology, Media and Professional Communication, MBA

Teaneck, New Jersey 07666
•Suburban •Private •Enrollment: 9,417



Begin Today!

I have a very good relationship with the ELS staff. The teachers and administrators are friendly, helpful and supportive. — JANA, CZECH REPUBLIC



Thousand Oaks, California

California Lutheran University

ELS/Thousand Oaks is located on the beautiful campus of California Lutheran University. About 20 kilometers from the Pacific Coast and 70 kilometers from downtown Los Angeles, Thousand Oaks is ranked as one of the safest cities of its size in the United States. It offers art, outdoor festivals, shopping and fantastic weather year-round.

RANKING: Ranked #18 – "Best Regional Universities - West" – *U.S. News & World Report, 2012*

COURSES: Intensive-Academic (\$1,730/session), Intensive-General (\$1,680/session), Semi-Intensive (\$1,410/session), American Explorer (\$1,350/session)

OPTIONS AVAILABLE: Conversation Partner, Volunteer Experience

OFFICIAL TESTING: TOEFL® iBT

HOUSING OPTIONS: Student residence (on-campus) or homestay (ranges from \$980-\$1,645/session)

HOST INSTITUTION: Concurrent enrollment available, waive TOEFL® for ELS 112 graduates

HOST INSTITUTION SAMPLE MAJORS INCLUDE: Marketing, Business, Journalism, Multimedia, Psychology; 1-year Master's Programs: Business Administration, Computer Science, Information Systems Technology, Economics

Thousand Oaks, California 91360
•Suburban •Private •Enrollment: 4,103



Washington, DC

Center with University Access

ELS/Washington, DC is located in one of the most attractive and safest residential neighborhoods in the area. The Center is only minutes from the American University campus where you have access to campus facilities. You will be close to many national museums and memorials all easily accessible by a public bus and subway system, making it easy to explore fabulous restaurants, shopping, galleries, historic neighborhoods, parks, theaters and sporting events. Many of the city's sightseeing opportunities are free of charge.

COURSES: Intensive-Academic (\$1,730/session), Intensive-General (\$1,680/session), Semi-Intensive (\$1,410/session), American Explorer (\$1,350/session), TOEFL® Prep (starting at \$2,040), Business English (\$1,680/session), Executive Programs

OFFICIAL TESTING: TOEFL® iBT

HOUSING OPTIONS: Student residence (off-campus) or homestay (ranges from \$1,235-\$1,300/session)



Washington, DC 20016
•Urban



I like this school. It is very comfortable, and I like the teachers and staff too because they really do the best for us! There is a good vibe and energy.
— LEONARDO, BRAZIL



Begin Today!



Sydney, Australia: Welcome to the exciting and unique destination!

Australia is a friendly, adventurous and modern nation that welcomes international students. The population comprises more than 130 nationalities, which also makes Australia one of the most multicultural countries in the world. With kangaroos, koalas and amazing icons such as the Great Barrier Reef and Sydney Harbour Bridge, Australia offers students the adventure of a lifetime in a safe environment.

The Australian education system is highly respected for its structure and strict regulatory environment, which support and protect the interests of all international students. The result is a guaranteed, quality education that produces graduates who are highly sought after on the world stage. Australia is home to many opportunities, with more than 40 universities. It also offers TAFEs (Technical and Further Education) and RTOs (Registered Training Organizations). An investment in an Australian education is an investment in your future.

ELS Universal English College – Australia City Center

Sydney NSW 2000, Australia
Universal Education Centre Pty. Ltd.
CRICOS Provider Code 00053J

ELS Universal English College is located in the center of Sydney. It is within minutes of the Opera House and the world-famous harbor, close to all public transport and the main shopping areas. With a population of around 4.5 million people, Sydney is the largest city in Australia. You can catch one of the many ferries from Circular Quay, only five minutes from the school. It is easy to take a bus to visit Bondi Beach, a ferry to Taronga Zoo or Manly Beach or a train to Sydney Olympic Park. Day trips to the Blue Mountains, Hunter Valley wineries, the South Coast and more are available all year round.

COURSES: Academic English, full-time General English, part-time General English, IELTS™ Preparation, Cambridge Preparation, Academic Semester, High School Preparation

OPTIONS AVAILABLE: Direct entry agreements with various universities and vocational education colleges, English + Internships, English + Work, Junior Holiday English – July and August – (not available for student visa holders)

OFFICIAL TESTING: Cambridge ESOL computer-based tests, TOEIC®

HOUSING OPTIONS: Homestay, student lodge

IMPORTANT NOTE: Much of the information presented in this brochure relates to the North American colleges and differs from that which applies in Australia (in particular course hours and timetables, course starting dates, course content and composition, curriculum, course progression, leveling systems, teacher qualification standards, provision of in-service teacher training, teaching and learning materials, accommodation options, learning technologies, university entrance requirements and procedures, course outcomes and direct entry agreements with universities, on-shore counselling services, testing procedures and policies and class sizes).



ELS coming soon to Brisbane! On the campus of Metropolitan South Institute of TAFE (MSIT)!





Opportunity for international students in Canada!

Welcome to Canada, where you will find a population that is rich in diversity and cities that are safe, clean and friendly. There is much to explore in Canada, from the beautiful Rocky Mountains to the awe-inspiring Niagara Falls. Whether you are looking for outdoor adventures like skiing, snowboarding and biking or you prefer big city fun such as entertainment, museums, fine dining and sports events, you find it all in Canada.

University campuses across Canada offer multicultural environments, beautiful spaces and friendly people. The quality, affordability and renowned research opportunities are key factors in choosing to study in Canada. As a leader in business, political diplomacy, technology, and arts and culture, Canada's education system is at the core of its success and its graduates are players on the world stage.

Canadian universities and colleges offer programs that range from fine art to biology, commerce to astronomy and media studies to religion. At present, these universities and university colleges offer more than 10,000 undergraduate and graduate degree programs, professional courses and certificates.

Toronto, Ontario, Canada City Center

Situated in the heart of Canada's largest city, ELS/Toronto is in the midst of the country's commercial and cultural center. The Center is only minutes from the city's financial, entertainment and shopping districts. It is within walking distance of many attractions, including art galleries, sports venues, theaters, libraries and museums. Day trips to Niagara Falls and multi-day tours of Ottawa/Montreal/Quebec, New York City, Chicago and Boston are among the most popular weekend student activities.

COURSES: Intensive-Academic (\$1,480 CAD/session), Intensive-General (\$1,440 CAD/session), Semi-Intensive (\$1,065 CAD/session), TOEFL® iBT, IELTS™ Prep, Study and Work program, Executive Programs

OPTIONS AVAILABLE: Business English and volunteering

HOUSING OPTIONS: Homestay, limited apartment-style hotels, limited dormitory accommodation (summer only)



Toronto, Ontario M5C 1H3, Canada
•Urban

Vancouver, British Columbia, Canada City Center

ELS/Vancouver is conveniently located in the heart of downtown Vancouver. It is a city of rare natural beauty and diverse cultures and is considered to be the jewel of Canada's west coast. Vancouver is consistently ranked among the most livable cities in the world. With mild winters and amazing summers, Vancouver offers good temperatures all year around. You can enjoy famous Stanley Park, the city's best beaches, and local mountains for skiing, snowboarding and mountain biking. All are within 30 minutes of the ELS Center. Great shops and cafés, art galleries, movie theatres and public libraries are all within walking distance from the ELS Center. Daytrips to Whistler, Victoria and Seattle (USA) and multi-day tours of the Rocky Mountains are among the most popular weekend student activities.

COURSES: Intensive-Academic (\$1,480 CAD/session), Intensive-General (\$1,440 CAD/session), Semi-Intensive (\$1,065 CAD/session), TOEFL® iBT, IELTS™ Prep, Study and Work program, Executive Programs

OPTIONS AVAILABLE: Business English and volunteering

HOUSING OPTIONS: Homestay, limited apartment-style hotels, limited dormitory accommodation (summer only)



Vancouver, British Columbia V6C 2C2, Canada
•Urban

Work while you study!

You can take advantage of special opportunities! You may be eligible for a part time off-campus work permit while studying at some of our Canadian university or college partners. Upon completion of your program, you may be qualified for a postgraduate work permit for up to three years.





Study English in Europe!

Universities in Europe are now better placed than ever before to offer a warm welcome to international students and to deliver a course of study that meets their career needs in today's global market. Enjoy the best of the old world's rich historical heritage while preparing for your future, while studying in English at a European university.

Thirty-one of the world's top 100 universities, as listed by *The Times* in its 2012 World University Rankings, are located in Europe, making it the second biggest bloc of universities after the USA. Europe offers a study experience like no other.

SKEMA Business School

SKEMA is a global school with five different campuses located in three different continents: three in France (Paris, Lille, Sophia Antipolis), one in the USA (Raleigh), and one in China (Suzhou). SKEMA stands for School of Knowledge Economy and Management, and its international faculty are specialized in teaching and research within the knowledge-based economy. SKEMA has established exchange agreements with more than 100 universities across the world. With the exception of its Grande Ecole program (a uniquely French academic route), its courses are taught entirely in English.

SKEMA offers five Bachelor's degree programs (with a total of 21 different specializations), 14 MSc and two Ph.D. programs. The wide range of majors offered include Marketing; Finance; Luxury & Fashion Management; Hotel, Travel & Tourism Management; Supply Chain Management & Purchasing; Project & Programme Management; Entrepreneurship; and Business & Economics.

SKEMA is recognized as one of Europe's leading business schools and has been ranked 57th in the *Financial Times* 2011 European Business School rankings. Its MSc in Financial Markets & Investments has been ranked 12th globally in the *Financial Times* 2012 Master's in Finance Pre-Experience rankings, while its MSc in Management is ranked 32nd globally in the *Financial Times* 2011 Master's in Management ranking.

Studying at SKEMA Business School, you will be living and studying in one of the most beautiful places in the world - the French Riviera - with its mountains, beaches and vast range of cultural activities.

SCHOLARSHIPS (FOR ELS GRADUATES): Undergraduate/Graduate: SKEMA offers a competitive tuition rate. You will be considered for a merit-based grant up to €1,800 per year, if requested on the application file. SKEMA also offers scholarships to high level athletes. Funds are deducted from the tuition fee and renewable every year depending on academic results.

ACCREDITATION(S): SKEMA is EQUIS accredited by EFMD (European Foundation for Management Development).

SKEMA is also accredited by the Global Accreditation Center for Project Management of the Project Management Institute (PMI GAC PM-USA) and by the Association for Project Management (APM-UK). These accreditations have been awarded in recognition of the school's track record in training for Project Management. SKEMA is the first non-American Business School to have received international accreditation from the GAC PM in 2005, and it is the only Business School outside the USA to be accredited by both above institutions.

TUITION AND HOUSING* (2012-2013):

UNDERGRADUATE Tuition: € 8,000

GRADUATE Tuition: € 13,000 (varies by program)

HOUSING: Varies

Sophia Antipolis, France

•Suburban •Total Enrollment: 6,200 •Academic Calendar: Semester •Private





China: Study English at a state-of-the-art ELS campus!

Consider the possibilities! You can begin your English studies in China and prepare yourself for adjustment to American academic culture before you leave. At the ELS American Center in Shanghai you can study and complete ELS Levels 101-109 so that you are ready for continuing on to ELS Levels 110-112 in other countries.

ELS American Education Center - China

ELS/Shanghai is situated on a state-of-the-art global university mini-campus in central Shanghai. You can fully adjust to international academic culture before departing from China. This campus contains an auditorium, library and 'smart' classrooms in a beautiful garden setting. You can enjoy studying the same curriculum and using the same materials and software offered at ELS's 60+ locations worldwide. You are taught by highly qualified native English-speaking instructors.

COURSES: ELS University Preparation Program (available in weekday, weeknight and weekend formats) and a variety of related academic courses.

OPTIONS AVAILABLE: Conditional Admission to ELS Partner Universities and on-level transfer to any ELS Center

OFFICIAL TESTING: Not applicable

HOUSING OPTIONS: Off-campus apartments

* Levels 101-109 available in Shanghai, students must complete Levels 110-112 in Australia, Canada or the United States.

Shanghai 200031 China
•Urban



Malaysia: An exciting study destination!

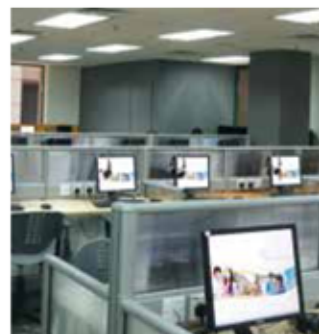
ELS students now have a new opportunity – study on the campus of Universiti Putra Malaysia. Malaysia presents you with a comfortable and very affordable choice for both English study and higher education, in a safe and high quality of life environment.

With more than 30 years of experience in international education, Malaysia's unique and well-structured higher education system offers you the opportunity to pursue an international degree at a competitive rate. Students from across the globe are confidently choosing Malaysia as an international education destination.

Universiti Putra Malaysia

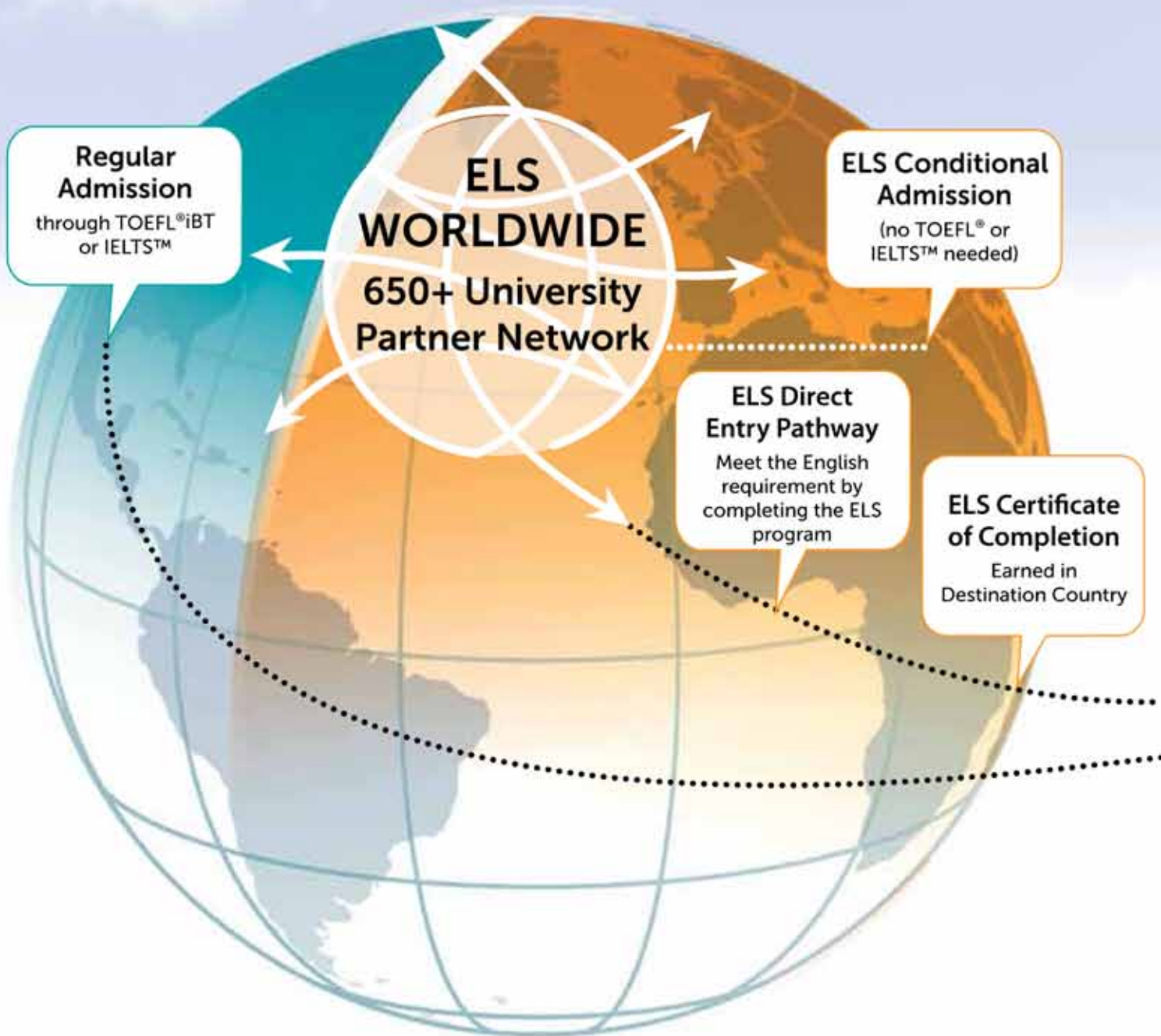
Universiti Putra Malaysia (UPM) is a leading research university in Malaysia. It is located in central Peninsular Malaysia, close to the capital city, Kuala Lumpur. UPM offers both undergraduate and postgraduate courses and has a research focus on medical, agricultural, business school, sciences, horticulture and other fields. The current student enrollment is 27,000. UPM is ranked as a 6-Star University in the Malaysia ranking system, the top ranking.

Students at the ELS Center on campus have access to campus facilities and use the same ELS curriculum and textbooks as ELS students in other countries.



ELS International Pathways to University Success

*Apply through ELS University Admission Services
from your home country*





Destination Country

EAP
ELS Level
Needed

AUSTRALIA

TAFE 109

Universities 112

Graduate Schools 112



CANADA

Community Colleges 109-112

Universities 112

Graduate Schools 112



EUROPE

Universities 112

Graduate Schools 112



MALAYSIA

Universities 109

Graduate Schools 109



UNITED STATES

Community Colleges 109

Universities 112

Graduate Schools 112

650+

Partner universities worldwide

1,700+

ELS authorized Counselors

80+

Locations around the world
in 11 countries

50+

Years of Leadership in
International Education

5 Easy Steps to Enter University

ELS Helps You Every Step of the Way

- STEP 1** Register for English studies at ELS Language Centers around the world!
- STEP 2** Choose a university and apply with the help of your ELS authorized Counselor and ELS University Admission Services.
- STEP 3** If you meet the admission requirements, you will receive a letter of "Conditional university admission subject to completing the ELS English proficiency level required"
- STEP 4** Study up to Level 112 at any of the 60+ ELS Centers in the USA, Canada, Australia, Europe or Malaysia to fulfill the university's English proficiency admission required.

Complete Specified ELS Level

By completing the last three levels of the ELS intensive English for Academic Purposes program in the country of your university, you satisfy the English requirement for more than 650 ELS partner universities worldwide!

- STEP 5** The Certificate of Completion is awarded to students who meet the prerequisites (minimum ELS Level 109) to enter and successfully complete the ELS Intensive English Program (EAP) Masters levels.

*Certificate of Completion requires a minimum of 12 weeks of study as a student in intensive English Masters levels.

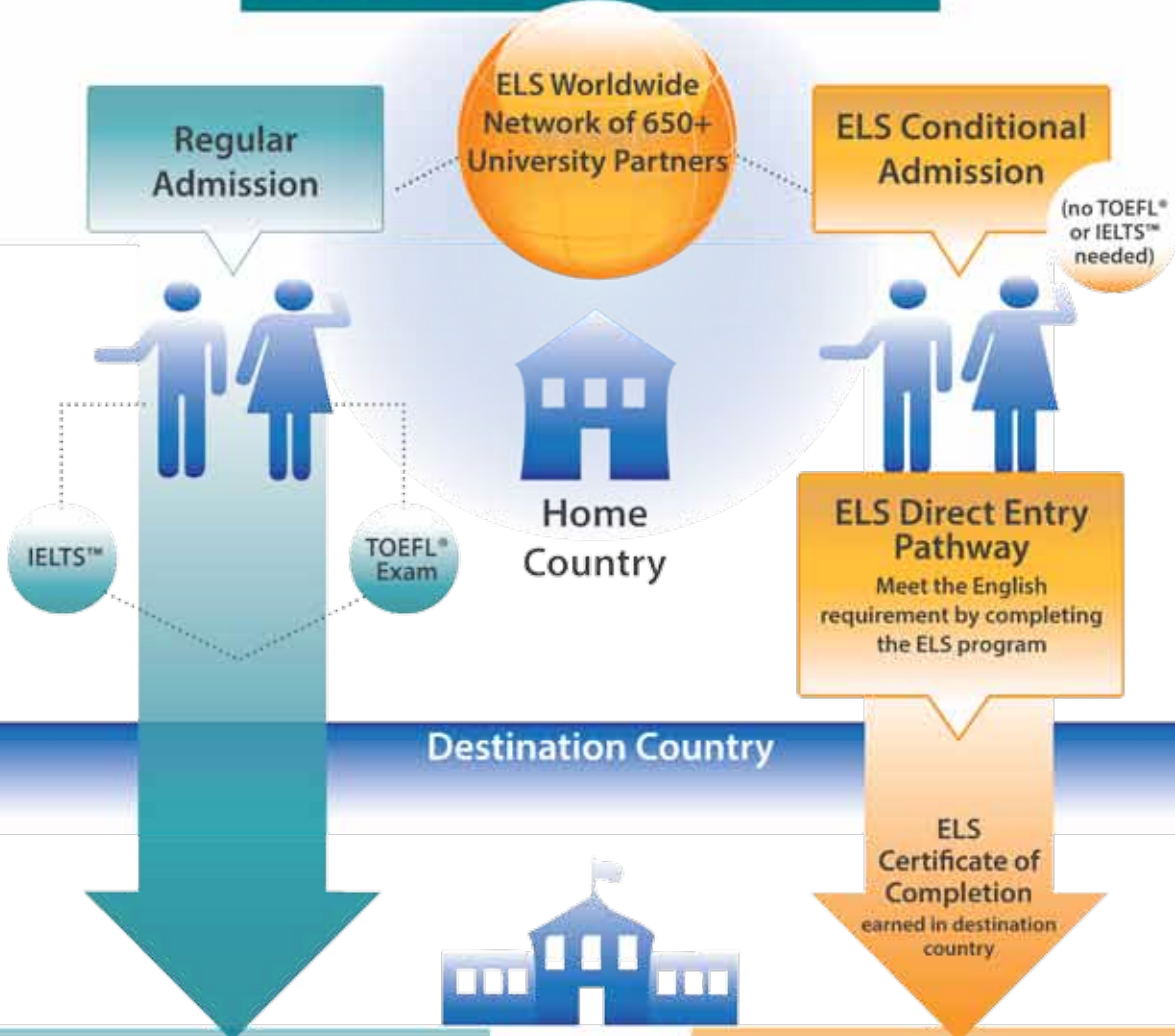
ELS Centers listed by Host Institutions

Institution	ELS Center	Page
USA		
Adelphi University	Garden City, New York	42
Adelphi University - Manhattan Center	New York (Manhattan), New York	51
Barry University	Miami, Florida	49
Bates Technical College	Tacoma, Washington	63
California Lutheran University	Thousand Oaks, California	64
Case Western Reserve University	Cleveland, Ohio	38
Clemson University at UCG	Clemson, South Carolina	38
College of Mount Saint Vincent	New York (Riverdale), New York	52
College of Southern Nevada	Las Vegas, Nevada	47
Concordia University	Portland, Oregon	55
Dominican University	Chicago, Illinois	37
Dominican University of California	San Francisco – North Bay, California	58
East Tennessee State University	Johnson City, Tennessee	46
Eckerd College	St. Petersburg, Florida	62
Fairleigh Dickinson University	Teaneck, New Jersey	64
Florida Institute of Technology	Melbourne, Florida	48
Front Range Community College	Denver, Colorado	40
Golden Gate University	San Francisco – Downtown, California	58
Grand Valley State University	Grand Rapids, Michigan	43
Hawai'i Pacific University	Honolulu, Hawaii	44
Idaho State University	Pocatello, Idaho	55
Indiana University – Purdue University Fort Wayne (IPFW)	Fort Wayne, Indiana	41
Indiana University – Purdue University Indianapolis (IUPUI)	Indianapolis, Indiana	45
The Juilliard School	New York (Manhattan), New York	51
Louisiana Tech University	Ruston, Louisiana	56
Marquette University	Milwaukee, Wisconsin	49
Middle Tennessee State University	Nashville, Tennessee	50
Mount Ida College	Boston – Newton, Massachusetts	35
Northern Illinois University	DeKalb, Illinois	40
Ohio Dominican University	Columbus, Ohio	39
Oklahoma City University	Oklahoma City, Oklahoma	52
Plymouth State University	Plymouth, New Hampshire	54
Point Park University	Pittsburgh, Pennsylvania	54
Queens University of Charlotte	Charlotte, North Carolina	36
Roger Williams University	Bristol, Rhode Island	36
Saint Joseph's University	Philadelphia, Pennsylvania	53
Southern Polytechnic State University	Atlanta, Georgia	34
The State University of New York The College at Brockport	Rochester, New York	56
Stetson University Extension	Orlando, Florida	53
Texas Tech University	Lubbock, Texas	48
University of Arkansas – Fort Smith	Fort Smith, Arkansas	41
University of Cincinnati	Cincinnati, Ohio	37
University of Houston – Clear Lake	Houston – Clear Lake, Texas	45
University of La Verne	La Verne, California	46
University of Mary Washington	Fredericksburg, Virginia	42
University of Missouri – St. Louis	St. Louis, Missouri	61
University of New Haven	New Haven, Connecticut	50
University of North Dakota	Grand Forks, North Dakota	43
University of St. Thomas – Houston	Houston, Texas	44
University of St. Thomas – Minnesota	St. Paul, Minnesota	62
The University of Tampa	Tampa, Florida	63
University of Texas at Dallas	Dallas, Texas	39
University of the Incarnate Word	San Antonio, Texas	57
University of Wyoming	Laramie, Wyoming	47
Europe		
SKEMA Business School	Sophia Antipolis, France	68
Malaysia		
Universiti Putra Malaysia	Kuala Lumpur	69



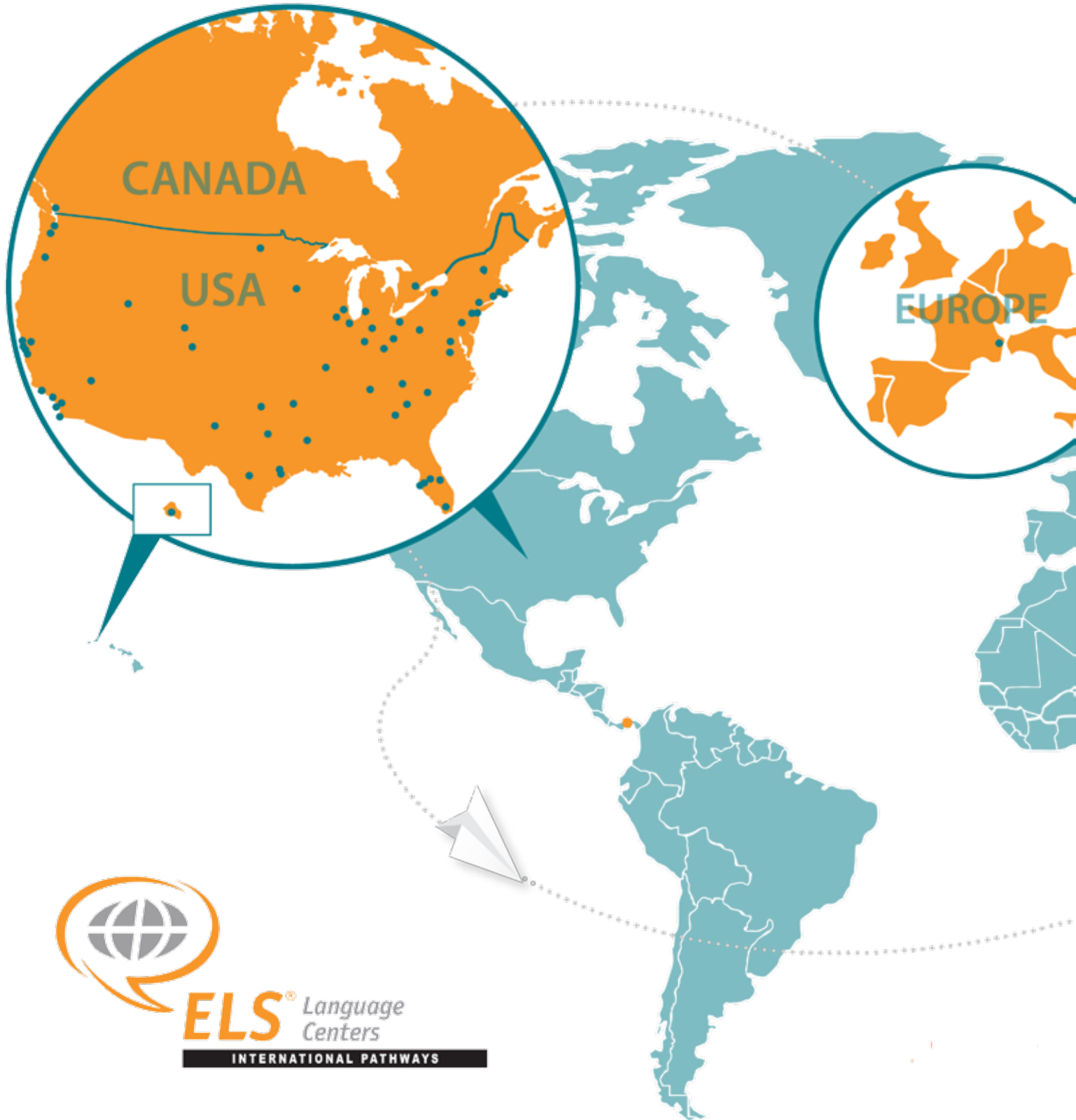
ELS International Pathways to University Success

**Apply through
ELS University Admission Services**



			Destination Country			
TAFE	Universities	Graduate Schools	AUSTRALIA	TAFE	Universities	Graduate Schools
Community Colleges	Universities	Graduate Schools	CANADA	Community Colleges	Universities	Graduate Schools
	Universities	Graduate Schools	EUROPE		Universities	Graduate Schools
	Universities	Graduate Schools	MALAYSIA		Universities	Graduate Schools
Community Colleges	Universities	Graduate Schools	UNITED STATES	Community Colleges	Universities	Graduate Schools

Explore our many locations in Australia, Ca *Plus Additional Locat*



ELS® Language
Centers

INTERNATIONAL PATHWAYS

Canada, China, Europe, Malaysia and the USA

Locations Across the World

